

# HPLC Application

ID No.: 16043

## MercuryMS - Luna 3µm C18(2) 20 x 2.0mm (mini column) for Tricyclics in Plasma by LC/MS/MS

**Column:** Luna® 3 µm C18(2) 100 Å, LC Column 20 x 2 mm, Ea

**Dimensions:** 20 x 2 mm ID

**Order No:** 00M-4251-B0

**Elution Type:** Isocratic

**Eluent A:** 0.1% Formic Acid in Water

**Eluent B:** 0.1% Formic Acid in Acetonitrile

| Gradient Profile: | Step No. | Time (min) | Pct A | Pct B |
|-------------------|----------|------------|-------|-------|
|                   | 1        | 0          | 28    | 72    |

**Flow Rate:** 0.6 mL/min

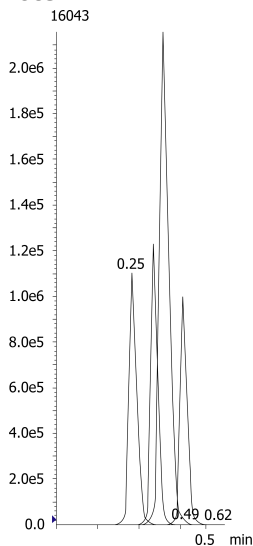
**Col. Temp.:** ambient

**Detection:** Mass Spectrometer (MS) @ amu (ambient)

**Analyst Note:** Total Ion Chromatogram is shown below. Single Ion Chromatograms are available. Please ask your Phenomenex Technical Representative®



Products used in this application:



### ANALYTES:

- 1 Doxepin**  
Retention Time: 0.25 min
- 2 Desipramine**  
Retention Time: 0.33 min
- 3 Imipramine**  
Retention Time: 0.36 min
- 4 Nortriptyline**  
Retention Time: 0.39 min
- 5 Trimipramine**  
Retention Time: 0.43 min
- 6 Amitriptyline**  
Retention Time: 0.48 min

