

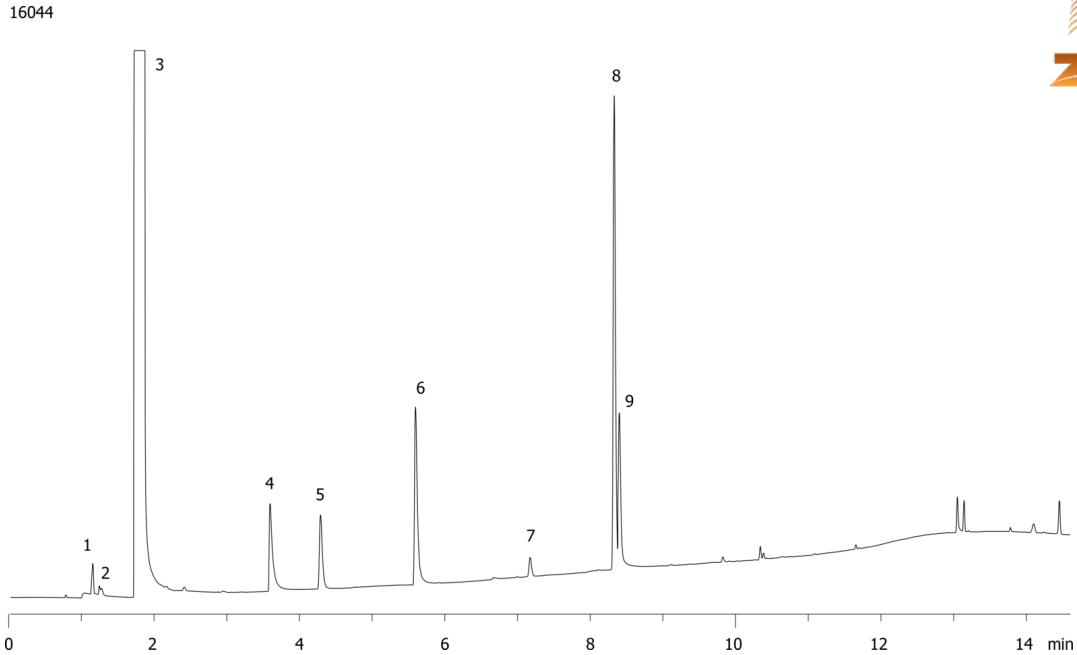
Glenfiddich[®] Scotch Whiskey on ZB-624

Column: Zebtron[™] ZB-624, GC Cap. Column 20 m x 0.18 mm x 1.00 μ m, Ea
Phase: 6% Cyanopropylphenyl 94% Dimethylpolysiloxane
Dimensions: 20 meters x 0.18 mm x 1 μ m
Order No: 7FD-G005-22
Oven Profile: 35°C for 4 min to 85°C at 10°C/min to 200°C at 25°C/min for 1 min

Carrier Gas: Constant Flow Helium, 1.5 mL/min
Injection: Split 40:1 0.2 μ L @ 140°C
Detection: Flame Ionization (FID) (200°C)
Analyst Note: Injection of pure Glenfiddich[®]



Products used in this application:



ANALYTES:

- 1 Acetaldehyde
- 2 Methanol
- 3 Ethanol
- 4 1-Propanol
- 5 Ethyl acetate
- 6 Isobutanol
- 7 Acetal
- 8 Isoamyl alcohol
- 9 2-Methylbutanol

