

Glenfiddich[®] Scotch Whiskey on ZB-WAXplus

Column: Zebron[™] ZB-WAXplus[™], GC Cap. Column 30 m x 0.25 mm x 0.25 μm, Ea

Phase: Polyethylene Glycol (PEG)

Dimensions: 30 meters x 0.25 mm x 0.25 μm

Order No: 7HG-G013-11

Oven Profile: 35°C for 5 min to 200°C at 30°C/min for 1min

Carrier Gas: Constant Flow Helium, 1.4 mL/min

Injection: Split 30:1 0.2 μL @ 140°C

Detection: Flame Ionization (FID) (280°C)

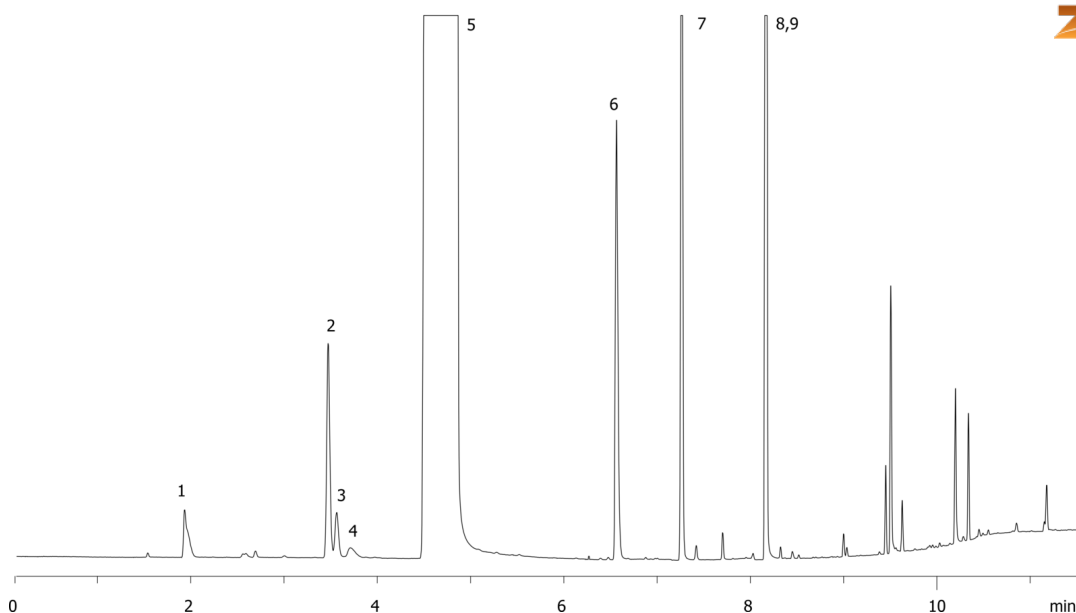
Analyst Note: Injection of pure Glenfiddich[®]



Products used in this application:



16046



ANALYTES:

- 1 Acetaldehyde
- 2 Ethyl acetate
- 3 Acetal
- 4 Methanol
- 5 Ethanol
- 6 1-Propanol
- 7 Isobutanol
- 8 Isoamyl alcohol
- 9 2-Methylbutanol

