

Glenfiddich® Scotch Whiskey on ZB-WAX

Column: Zebron™ ZB-WAX, GC Cap. Column 20 m x 0.18 mm x 0.18 µm, Ea

Phase: Polyethylene Glycol (PEG)

Dimensions: 20 meters x 0.18 mm x 0.18 µm

Order No: 7FD-G007-08

Oven Profile: 40°C for 3 min to 180°C at 25°C/min

Carrier Gas: Constant Flow Hydrogen, 2 mL/min

Injection: Split 50:1 0.2 µL @ 160°C

Detection: Flame Ionization (FID) (200°C)

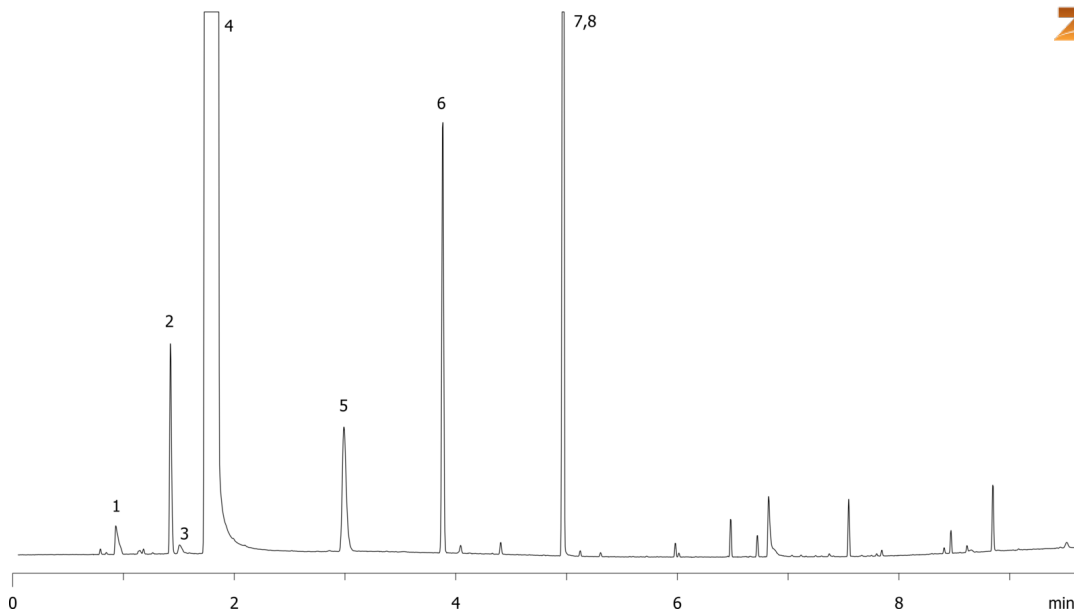
Analyst Note: Injection of pure Glenfiddich®



Products used in this application:



16047



ANALYTES:

- 1 Acetaldehyde
- 2 Ethyl acetate
- 3 Acetal
- 4 Ethanol
- 5 1-Propanol
- 6 Isobutanol
- 7 Isoamyl alcohol
- 8 2-Methylbutanol

