

# HPLC Application

ID No.: 16050

## Antidepressants Mix by Gemini 5µm C18 at pH 7.0

**Column:** Gemini® 5 µm C18 110 Å, LC Column 150 x 4.6 mm, Ea

**Dimensions:** 150 x 4.6 mm ID

**Order No:** 00F-4435-E0

**Elution Type:** Isocratic

**Eluent A:** 20mM Potassium Phosphate, pH 7.0

**Eluent B:** Acetonitrile

**Eluent C:** Methanol

Gradient Profile:	Step No.	Time (min)	Pct A	Pct B	Pct C
	1	0	30	30	40

**Flow Rate:** 1.5 mL/min

**Col. Temp.:** ambient

**Detection:** UV-Vis Abs.-Variable Wave.(UV) @ 254 nm (ambient)

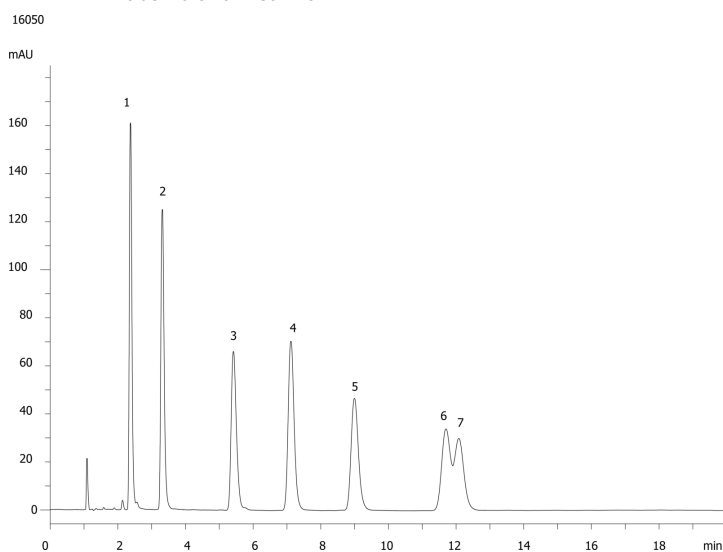
**Analyst Note:** SecurityGuard™ Guard Cartridge System extends column lifetime.

- SecurityGuard Cartridges, Gemini C18 4 x 3.0mm, 10/Pk Part No.: AJ0-7597

- Holder Part No.: KJ0-4282



Products used in this application:



### ANALYTES:

- 1 Nordoxepin
- 2 Nortriptyline
- 3 Doxepin
- 4 Imipramine
- 5 Amitriptyline
- 6 Clomipramine
- 7 Trimipramine

