

GC Application

ID No.: 16053

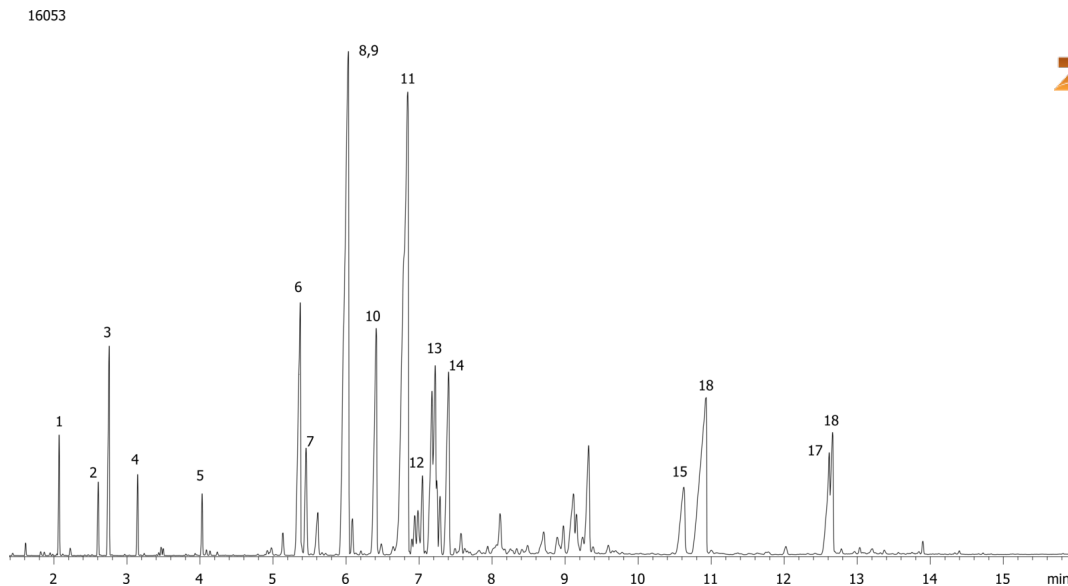
Ylang Ylang Oil on ZB-1ms 10x0.10x0.10

Column: Zebtron™ ZB-1MS, GC Cap. Column 10 m x 0.10 mm x 0.10 µm, Ea
Phase: 100% Dimethylpolysiloxane
Dimensions: 10 meters x 0.1 mm x 0.1 µm
Order No: 7CB-G011-02
Oven Profile: 60°C to 120°C at 15°C/min to 160°C at 5°C/min to 220°C at 20°C/min

Carrier Gas: Constant Flow Helium, 0.5 mL/min
Injection: Split 120:1 0.2 µL @ 160°C
Detection: Mass Selective (MSD) (300°C)
Analyst Note: Oil was 10% in dichloromethane.



Products used in this application:



Ylang Ylang Oil on ZB-1ms 10x0.10x0.10

ANALYTES:

- 1 p-Methyl anisole
- 2 Methyl benzoate
- 3 Linalool
- 4 Benzyl acetate
- 5 Geraniol
- 6 Geranyl acetate
- 7 Copaene
- 8 b-Caryophyllene
- 9 Cinnamyl acetate
- 10 Humulene
- 11 Germacrene
- 12 alpha-Amorphene
- 13 Farnesene
- 14 d-Cadinene
- 15 Farnesol
- 16 Benzyl benzoate
- 17 Benzyl salicylate
- 18 Farnesyl acetate

