

## Poly Brominated Diphenyl Ethers (PBDEs) on ZB-5HT 30x0.25x0.10

**Column:** Zebtron<sup>™</sup> ZB-5HT, GC Cap. Column 30 m x 0.25 mm x 0.10 μm, Ea

**Phase:** 5% Phenyl 95% Dimethylpolysiloxane

**Dimensions:** 30 meters x 0.25 mm x 0.1 μm

**Order No:** 7HG-G015-02

**Oven Profile:** 125°C to 380°C at 22°C/min for 15min

**Carrier Gas:** Constant Flow Helium, 1.3 mL/min

**Injection:** Pulsed :1 2 μL @ 350°C

**Detection:** Mass Selective (MSD) (0°C)

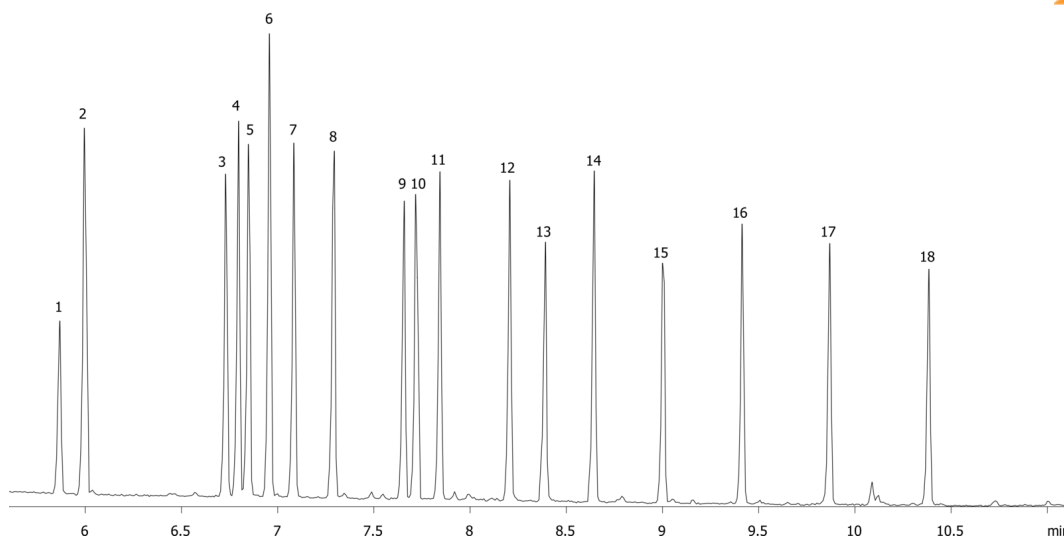
**Analyst Note:** Analytes were 2.5ppm in isoctane  
Pulsed splitless injection at 50psi using direct connect liner.



Products used in this application:



16055



## Poly Brominated Diphenyl Ethers (PBDEs) on ZB-5HT 30x0.25x0.10

### ANALYTES:

- 1 BDE-25
- 2 BDE-28
- 3 BDE-75
- 4 BDE-49
- 5 BDE-71
- 6 BDE-47
- 7 BDE-66
- 8 BDE-77
- 9 BDE-100
- 10 BDE-119
- 11 BDE-99
- 12 BDE-85
- 13 BDE-154
- 14 BDE-153
- 15 BDE-138
- 16 BDE-183
- 17 BDE-190
- 18 BDE-203

