

GC Application

ID No.: 16070

Rosemary Oil on ZB-1MS

Column: Zebtron™ ZB-1MS, GC Cap. Column 10 m x 0.10 mm x 0.10 μm, Ea

Phase: 100% Dimethylpolysiloxane

Dimensions: 10 meters x 0.1 mm x 0.1 μm

Order No: 7CB-G011-02

Oven Profile: 45°C for 2min to 130°C at 8°C/min to 200°C at 30°C/min for 2min

Carrier Gas: Constant Flow Helium, 0.4 mL/min

Injection: Split 120:1 0.2 μL @ 160°C

Detection: Mass Selective (MSD) (300°C)

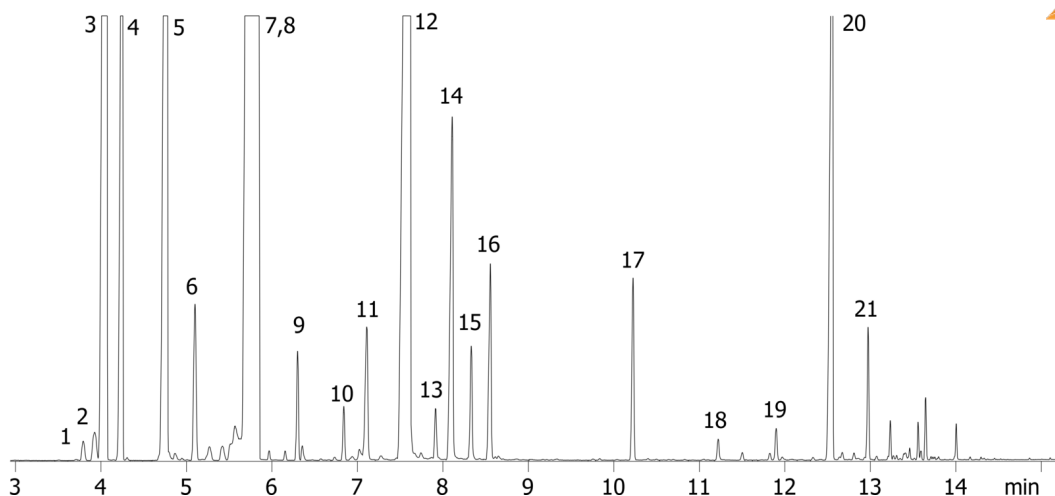
Analyst Note: Sample was 10% in dichloromethane



Products used in this application:



16070



Rosemary Oil on ZB-1MS

ANALYTES:

- 1 Tricyclene
- 2 a-Thujene
- 3 a-Pinene
- 4 Camphene
- 5 beta-Pinene
- 6 beta-Myrcene
- 7 Eucalyptol
- 8 Limonene
- 9 g-Terpinene
- 10 Terpinolene
- 11 Linalool
- 12 Camphor
- 13 Isoborneol
- 14 Borneol
- 15 4-Terpineol
- 16 Terpineol
- 17 Bornyl acetate
- 18 Eugenol
- 19 Copaene
- 20 Caryophyllene
- 21 alpha-Caryophyllene

