

# HPLC Application

ID No.: 16100

## Beta-Blockers at pH 2.5 using Onyx C18 3.0mm ID

**Column:** Onyx<sup>™</sup> Monolithic C18, LC Column 100 x 3 mm, Ea  
**Dimensions:** 100 x 3 mm ID  
**Order No:** CH0-8158  
**Elution Type:** Isocratic  
**Eluent A:** 20mM Potassium phosphate pH 2.5  
**Eluent B:** Acetonitrile  
**Gradient Profile:**

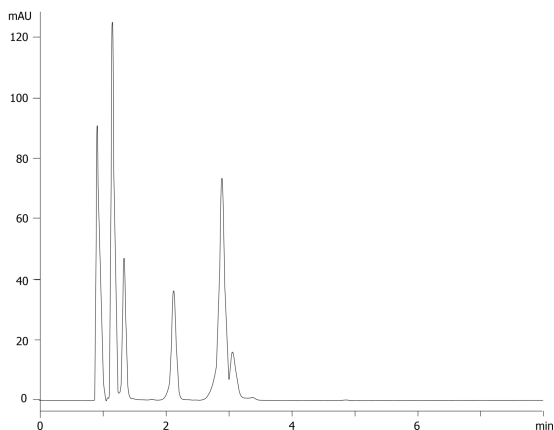
Step No.	Time (min)	Pct A	Pct B
1	0	75	25

**Flow Rate:** 0.6 mL/min  
**Col. Temp.:** ambient  
**Detection:** UV-Vis Abs.-Variable Wave.(UV) @ 230 nm (ambient)

16100



Products used in this application:



### ANALYTES:

- 1 Atenolol
- 2 Pindolol
- 3 Metoprolol
- 4 Labetalol
- 5 Propranolol
- 6 Alprenolol

