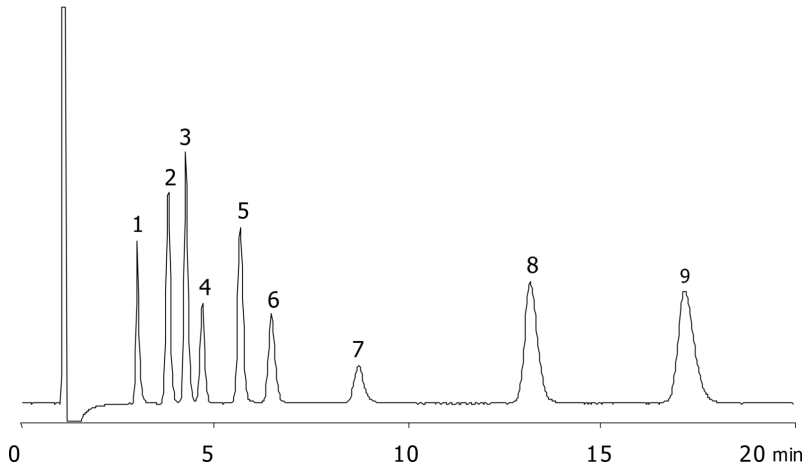


Alkyl Amines and Cations

Column: N/A
Dimensions: N/A
Order No: N/A
Elution Type: N/A
Eluent A: 4mM Methanesulfonic acids aq.
Gradient

Step No.	Time (min)	Pct A
1	0	100

Profile:
Flow Rate: 1 mL/min
Col. Temp.: 40 °C
Detection: Conductivity @ (ambient)
16113



ANALYTES:

- 1 Li+
- 2 Na+
- 3 NH₄⁺
- 4 Methylamine
- 5 K+
- 6 Trimethylamine
- 7 Triethylamine
- 8 Mg²⁺
- 9 Ca²⁺

