

HPLC Application

ID No.: 16131

Tricyclic Antidepressants at Neutral pH by Gemini Sum C18

Column: Gemini[®] 5 μ m C18 110 \AA , LC Column 150 x 4.6 mm, Ea

Dimensions: 150 x 4.6 mm ID

Order No: 00F-4435-E0

Elution Type: Isocratic

Eluent A: 20mM Potassium Phosphate pH7.0

Eluent B: Acetonitrile

Eluent C: Methanol

Gradient Profile:	Step No.	Time (min)	Pct A	Pct B	Pct C
	1	0	30	35	35

Flow Rate: 1.5 mL/min

Col. Temp.: 25 $^{\circ}$ C

Detection: UV-Vis Abs.-Variable Wave.(UV) @ 254 nm (25 $^{\circ}$ C)

Analyst Note: *** Results are the average of 6 injections

Peak 3, N=9032, SYMM=0.85

Peak 4, N=9190, SYMM=0.89

Average of 4 peaks, N=8498

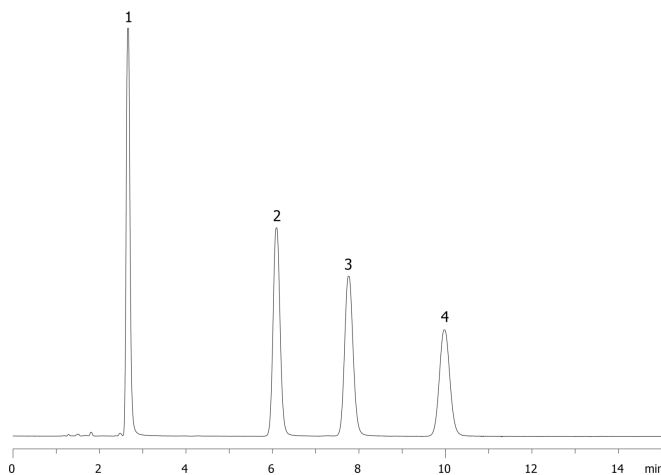
Column Back Pressure = 117bar



Products used in this application:



16131



ANALYTES:

- 1 Imipramine
- 2 Nortriptyline
- 3 Amitriptyline
- 4 Clomipramine

