

## Blood Alcohols on ZB-1701

**Column:** Zebtron™ ZB-1701, GC Cap. Column 30 m x 0.32 mm x 1.00 μm, Ea

**Phase:** 14% Cyanopropylphenyl 86% Dimethylpolysiloxane

**Dimensions:** 30 meters x 0.32 mm x 1 μm

**Order No:** 7HM-G006-22

**Oven Profile:** 40°C Isothermal

**Carrier Gas:** Constant Flow Helium, 7 mL/min

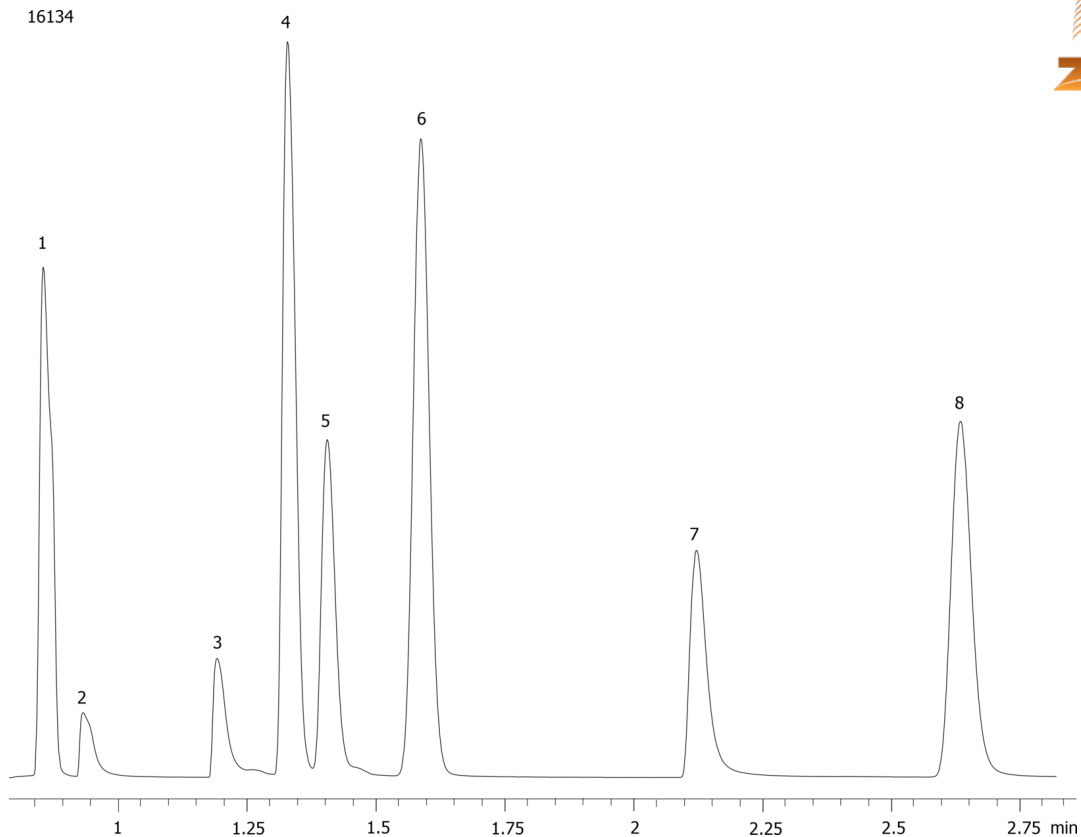
**Injection:** Split 13:1 200 μL @ 200°C

**Detection:** Flame Ionization (FID) (220°C)

**Analyst Note:** Static Headspace: 1mL 50ppm sample in 20mL vial at 70°C for 15 minutes.



Products used in this application:



### ANALYTES:

- 1 Acetaldehyde
- 2 Methanol
- 3 Ethanol
- 4 Acetone
- 5 Isopropanol
- 6 t-Butanol
- 7 n-Propanol
- 8 2-Butanol

