

European Red List Volatiles on ZB-624

Column: Zebtron™ ZB-624, GC Cap. Column 20 m x 0.18 mm x 1.00 µm, Ea

Phase: 6% Cyanopropylphenyl 94% Dimethylpolysiloxane

Dimensions: 20 meters x 0.18 mm x 1 µm

Order No: 7FD-G005-22

Oven Profile: 90°C Isothermal

Carrier Gas: Constant Flow Helium, 1.5 mL/min

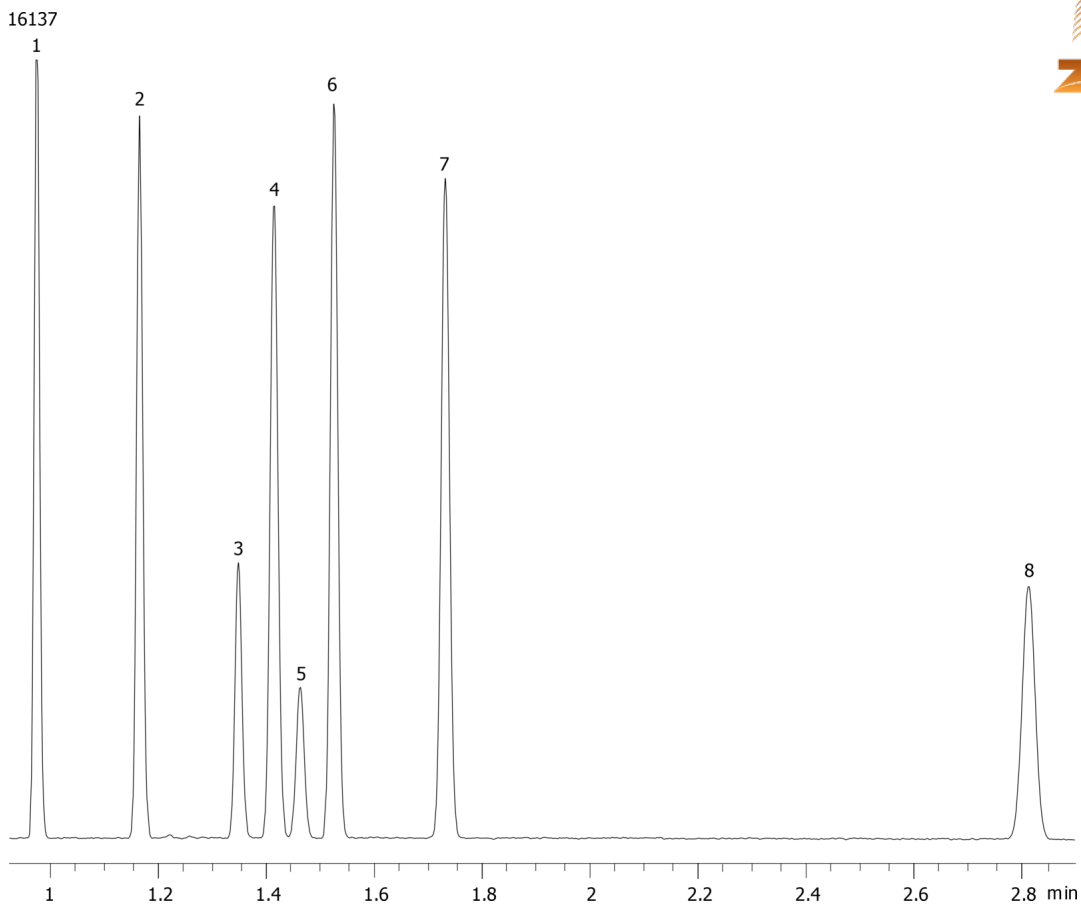
Injection: Split 50:1 1 µL @ 250°C

Detection: Flame Ionization (FID) (260°C)

Analyst Note: Static Headspace: 8µL of 12.5% volatiles mix sample in a 0.18mL limited volume insert inside a 2.0mL vial.



Products used in this application:



ANALYTES:

- 1 1,1-Dichloroethylene
- 2 1,1-Dichloroethane
- 3 Chloroform
- 4 1,1,1-Trichloroethane
- 5 Carbon tetrachloride
- 6 1,2-Dichloroethane
- 7 Trichloroethylene
- 8 Tetrachloroethylene

