

# GC Application

ID No.: 16144

## PolyBrominated Diphenyl Ethers (PBDEs) including #209 on ZB-5HT

**Column:** Zebtron<sup>™</sup> ZB-5HT, GC Cap. Column 15 m x 0.25 mm x 0.10 μm, Ea

**Phase:** 5% Phenyl 95% Dimethylpolysiloxane

**Dimensions:** 15 meters x 0.25 mm x 0.1 μm

**Order No:** 7EG-G015-02

**Oven Profile:** 70°C to 160°C at 25°C/min to 350°C at 10°C/min for 5 min

**Carrier Gas:** Constant Flow Helium, 1.5 mL/min

**Injection:** On-Column :1 0.5 μL @ 73°C

**Detection:** Electron Capture (ECD) (400°C)

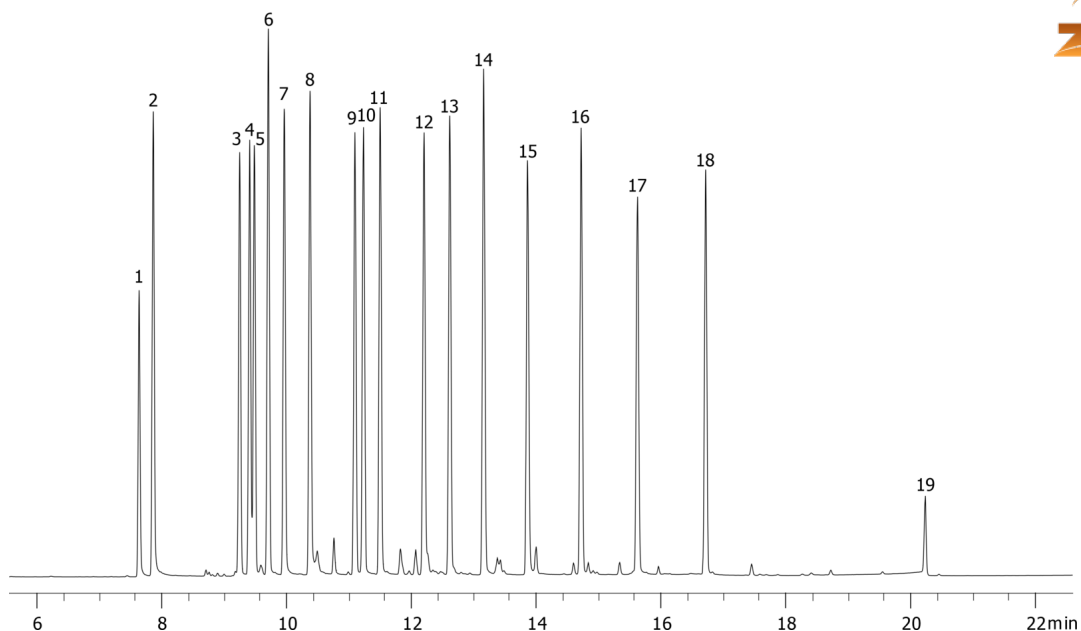
**Analyst Note:** Sample was 2.5ppm in Iso-Octane



Products used in this application:



16144



## PolyBrominated Diphenyl Ethers (PBDEs) including #209 on ZB-5HT

### ANALYTES:

- 1 BDE-25
- 2 BDE-28
- 3 BDE-75
- 4 BDE-49
- 5 BDE-71
- 6 BDE-47
- 7 BDE-66
- 8 BDE-77
- 9 BDE-100
- 10 BDE-119
- 11 BDE-99
- 12 BDE-85
- 13 BDE-154
- 14 BDE-153
- 15 BDE-138
- 16 BDE-183
- 17 BDE-190
- 18 BDE-203
- 19 BDE-209

