

ASTM Method D1945-96: Extended Natural Gas Analysis on ZB-1

Column: Zebtron[™] ZB-1, GC Cap. Column 60 m x 0.32 mm x 1.00 µm, Ea

Phase: 100% Dimethylpolysiloxane

Dimensions: 60 meters x 0.32 mm x 1 µm

Order No: 7KM-G001-22

Oven Profile: 35°C hold for 3min. to 200°C ramp at 30°C/min.

Carrier Gas: Constant Flow Helium, 2 mL/min

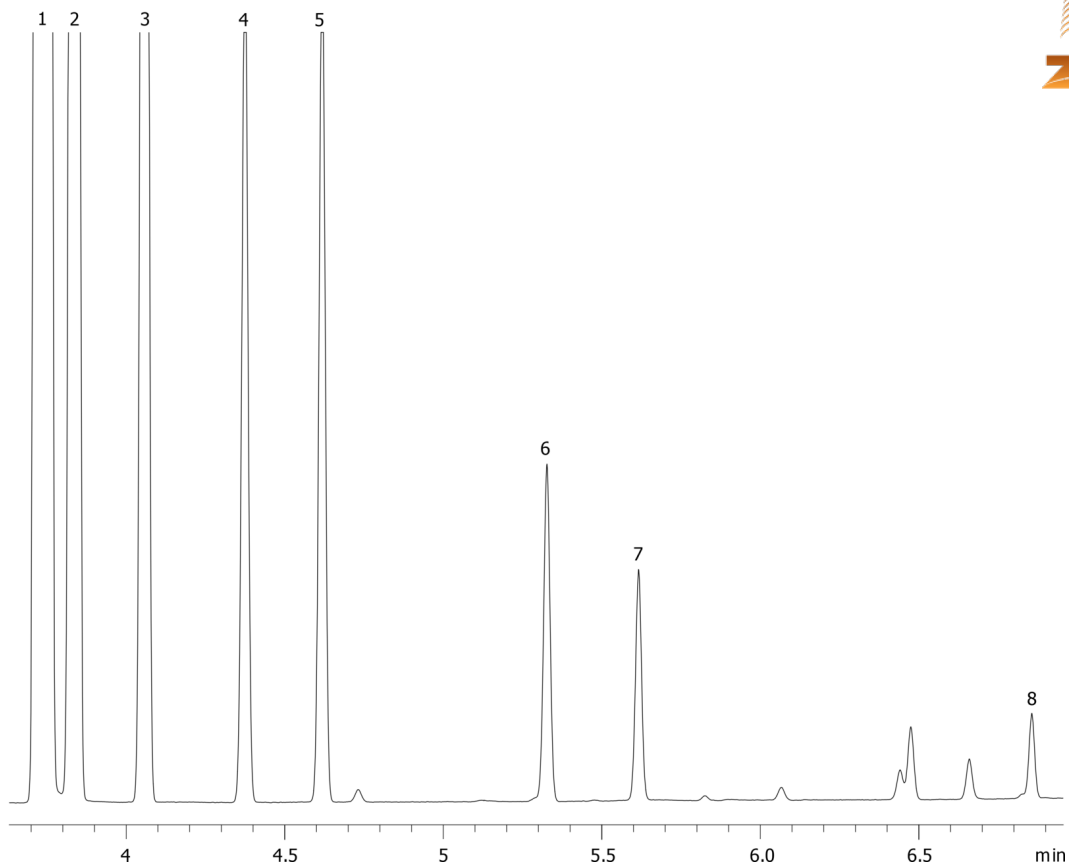
Injection: Split 50:1 500 µL @ 250°C

Detection: Flame Ionization (FID) (250°C)

16146



Products used in this application:



ANALYTES:

- 1 Methane
- 2 Ethane
- 3 Propane
- 4 Isobutane
- 5 Butane
- 6 Isopentane
- 7 Pentane
- 8 Heptane

