

GC Application

ID No.: 16148

ASTM 6352 on ZB-1HT

Column: Zebtron[™] ZB-1HT, GC Cap. Column 5 m x 0.53 mm x 0.10 μm, Ea

Phase: 100% Dimethylpolysiloxane

Dimensions: 5 meters x 0.53 mm x 0.1 μm

Order No: 7AK-G014-02

Oven Profile: 40°C for 0.5min to 430°C at 20°C/min for 10min

Carrier Gas: Constant Flow Helium, 4.4 mL/min

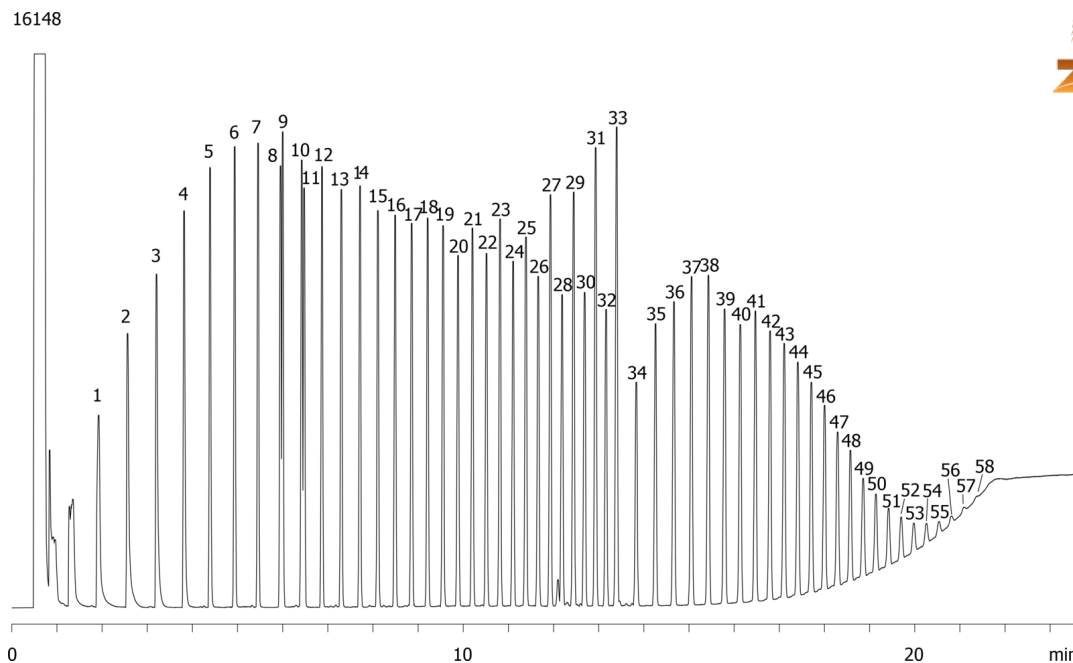
Injection: On-Column :1 0.1 μL @ 43°C

Detection: Refractive Index (430°C)

Analyst Note: Sample was a combination of PolyWax 655 and retention time markers C8-C40 in CS₂/Chloroform



Products used in this application:



ASTM 6352 on ZB-1HT

ANALYTES:

1 C10	41 C56
2 C11	42 C58
3 C12	43 C60
4 C13	44 C62
5 C14	45 C64
6 C15	46 C66
7 C16	47 C68
8 C17	48 C70
9 Pristane	49 C72
10 C18	50 C74
11 Phytane	51 C76
12 C19	52 C78
13 C20	53 C80
14 C21	54 C82
15 C22	55 C84
16 C23	56 C86
17 C24	57 C88
18 C25	58 C90
19 C26	
20 C27	
21 C28	
22 C29	
23 C30	
24 C31	
25 C32	
26 C33	
27 C34	
28 C35	
29 C36	
30 C37	
31 C38	
32 C39	
33 C40	
34 C42	
35 C44	
36 C46	
37 C48	
38 C50	
39 C52	
40 C54	

