

# GC Application

ID No.: 16164

## Low Breakdown of Endrin on ZB-MR2

**Column:** Zebtron<sup>™</sup> ZB-MultiResidue<sup>™</sup>-2, GC Cap. Column 30 m x 0.32 mm x 0.25  $\mu$ m, Ea

**Phase:**

**Dimensions:** 30 meters x 0.32 mm x 0.25  $\mu$ m

**Order No:** 7HM-G017-11

**Oven Profile:** 100 °C for 0.5 min to 340 °C at 15 °C/min for 2 min

**Carrier Gas:** Constant Flow Helium, 1.6 mL/min

**Injection:** Splitless :1 1  $\mu$ L @ 250°C

**Detection:** Electron Capture (ECD) (350°C)

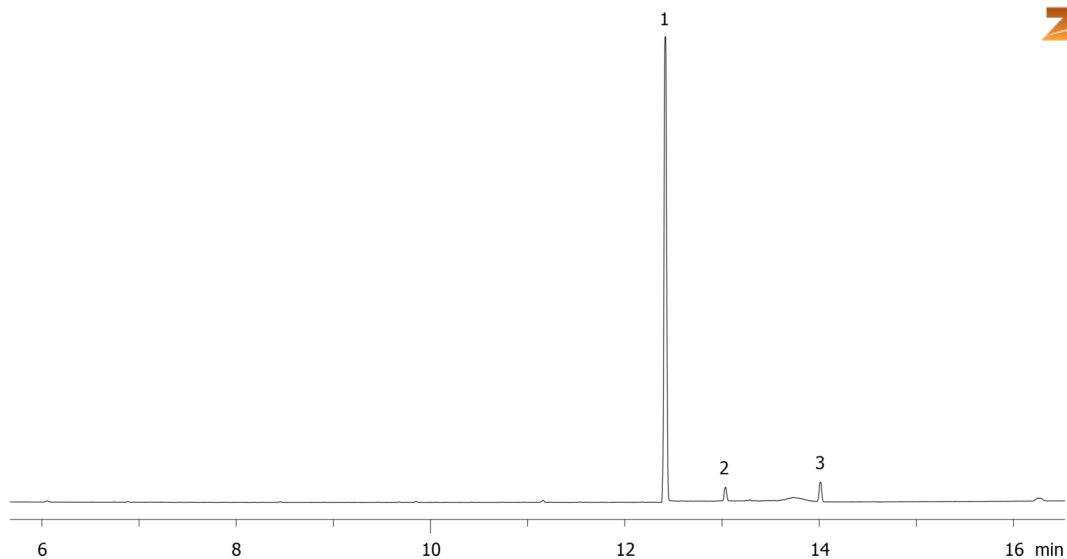
**Analyst Note:** Analyte was 250 pg on column.



Products used in this application:



16164



### ANALYTES:

- 1 Endrin
- 2 Endrin aldehyde
- 3 Endrin ketone

