

# GC Application

ID No.: 16176

## PCB Congeners: WHO 16 and DIN 51527 on ZB-MR2

**Column:** Zebtron<sup>™</sup> ZB-MultiResidue<sup>™</sup>-2, GC Cap. Column 30 m x 0.32 mm x 0.25 μm, Ea

**Phase:**

**Dimensions:** 30 meters x 0.32 mm x 0.25 μm

**Order No:** 7HM-G017-11

**Oven Profile:** 100 °C for 0.5 min to 200 °C at 25 °C/min to 320 °C at 6 °C/min for 2 min

**Carrier Gas:** Constant Flow Helium, 1.5 mL/min

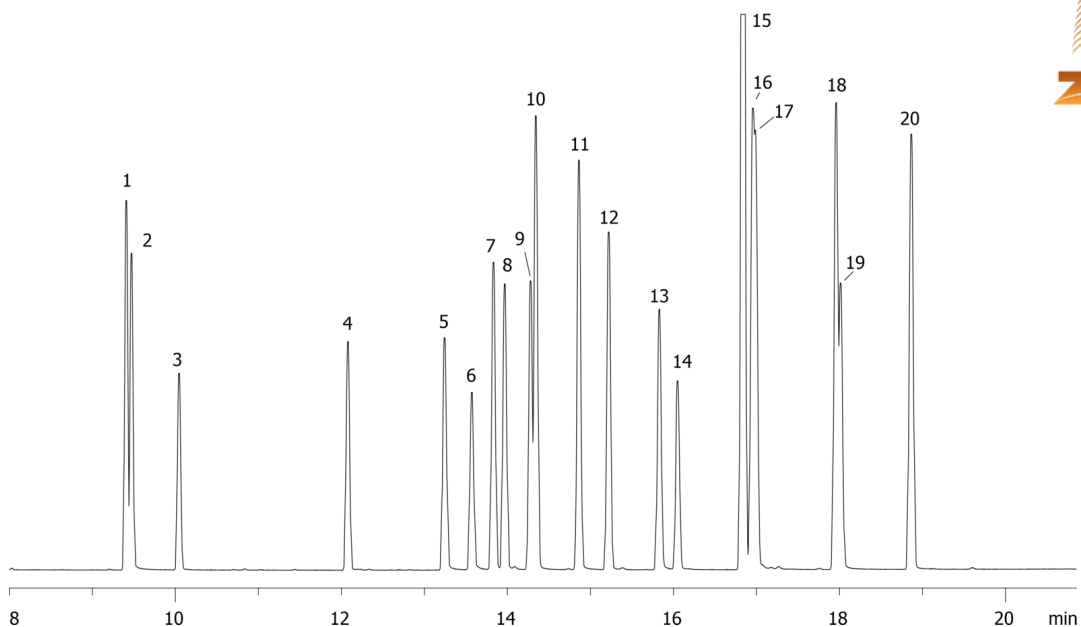
**Injection:** Splitless :1 1 μL @ 250°C

**Detection:** Electron Capture (ECD) (350°C)

16176



Products used in this application:



## PCB Congeners: WHO 16 and DIN 51527 on ZB-MR2

### ANALYTES:

- 1 BZ# 31
- 2 BZ# 28
- 3 BZ# 52
- 4 BZ# 101
- 5 BZ# 81
- 6 BZ# 77
- 7 BZ# 123
- 8 BZ# 118
- 9 BZ# 153
- 10 BZ# 114
- 11 BZ# 105
- 12 BZ# 138
- 13 BZ# 126
- 14 BZ# 167
- 15 BZ# 156
- 16 BZ# 180
- 17 BZ# 157
- 18 BZ# 170
- 19 BZ# 169
- 20 BZ# 189

