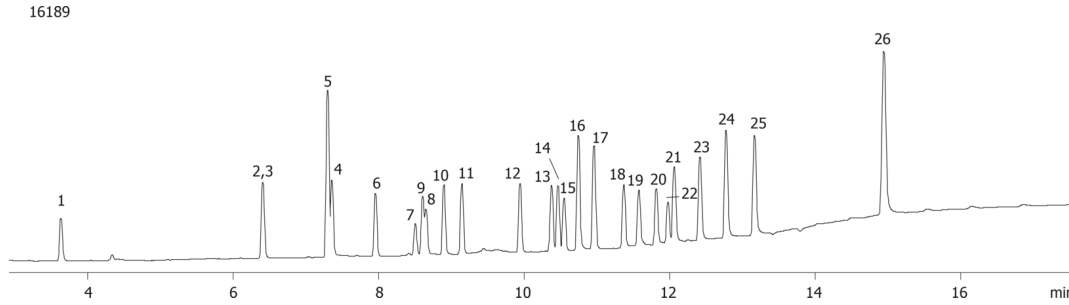


EPA Method 8081: Connecticut and Massachusetts State Specific Methods on ZB-MR2

Column: N/A
Phase: N/A
Dimensions: N/A
Order No: N/A
Oven Profile: N/A

Carrier Gas: N/A
Injection: N/A
Detection: N/A

Analyst Note: Application submitted from Phoenix Environmental Lab, Inc. Manchester, CT



EPA Method 8081: Connecticut and Massachusetts State Specific Methods on ZB-MR2

ANALYTES:

- 1 Hexachlorocyclopentadiene
- 2 Propachlor
- 3 Tetrachloro-m-xylene
- 4 alpha-BHC
- 5 Hexachlorobenzene
- 6 gama-BHC
- 7 beta-BHC
- 8 Alachlor
- 9 delta-BHC
- 10 Heptachlor
- 11 Aldrin
- 12 Heptachlor epoxide
- 13 gama-Chlordane
- 14 alpha-Chlordane
- 15 Endosulfan I
- 16 4,4'-DDE
- 17 Dieldrin
- 18 Endrin
- 19 4,4'-DDD
- 20 Endosulfan II
- 21 Endrin aldehyde
- 22 4,4'-DDT
- 23 Endosulfan sulfate
- 24 Methoxychlor
- 25 Endrin ketone
- 26 Decachlorobiphenyl

