

HPLC Application

ID No.: 16192

Overlay of PEGylated vs. Native Proteins on Jupiter[®] 300 C18 Column

Column: Jupiter[®] 5 μ m C18 300 Å, LC Column 150 x 4.6 mm, Ea

Dimensions: 150 x 4.6 mm ID

Order No: 00F-4053-E0

Elution Type: Gradient

Eluent A: 0.1% TFA and 2% ACN in Water

Eluent B: 70/20% ACN/IPA, 0.08% TFA in Water

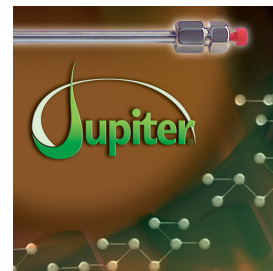
Gradient Profile:	Step No.	Time (min)	Pct A	Pct B
	1	0	85	15
	2	25	30	70

Flow Rate: 1 mL/min

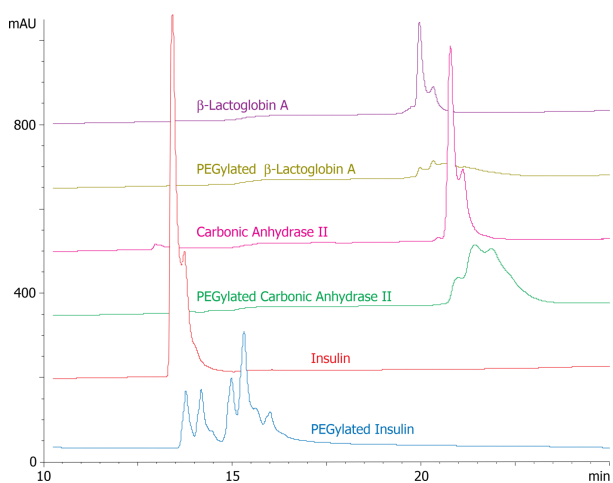
Col. Temp.: 45 °C

Detection: UV-Vis Abs.-Variable Wave.(UV) @ 214 nm (ambient)

Analyst Note: Reversed phase of PEGylated and native proteins run on a Jupiter 300 C4 column. Note the decrease in resolution of PEGylated proteins on the C4 column.
16192



Products used in this application:



ANALYTES:

- 1 PEGylated vs. Native Proteins

