

HPLC Application

ID No.: 16193

PEGylated Insulin on Jupiter[®] 300 C4, C18 and Two Experimental Columns

Column: Jupiter[®] 5 μ m C4 300 Å, LC Column 150 x 4.6 mm, Ea

Dimensions: 150 x 4.6 mm ID

Order No: 00F-4167-E0

Elution Type: Gradient

Eluent A: 0.1% TFA and 2% ACN in Water

Eluent B: 70/20% ACN/IPA, 0.08% TFA in Water

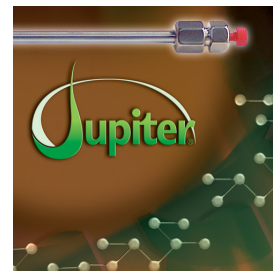
Gradient Profile:	Step No.	Time (min)	Pct A	Pct B
	1	0	85	15
	2	25	30	70

Flow Rate: 1 mL/min

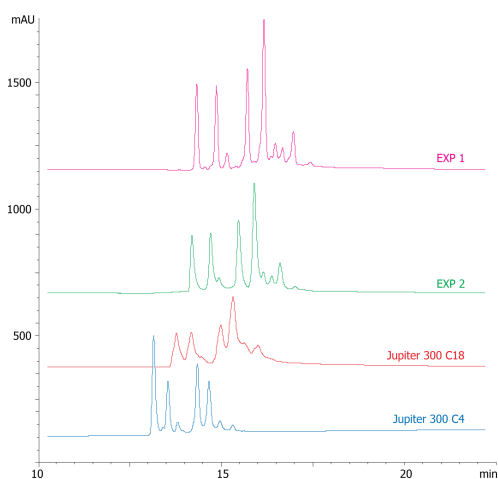
Col. Temp.: 45 °C

Detection: UV-Vis Abs.-Variable Wave.(UV) @ 214 nm (ambient)

Analyst Note: Reversed phase of PEGylated Insulin run on listed columns. Note the reduced resolution for the Jupiter C18 and EXP 2 column which compare to the Jupiter C4 column. Although it is difficult to visualize, the Jupiter actually has better resolution of PEGylated forms than the EXP 1 column.



Products used in this application:



ANALYTES:

- 1 PEGylated Insulin

