

## Jupiter® 300 C4 - Comparison of Mobile Phase Conditions

**Column:** Jupiter® 5 µm C4 300 Å, LC Column 150 x 4.6 mm, Ea

**Dimensions:** 150 x 4.6 mm ID

**Order No:** 00F-4167-E0

**Elution Type:** Gradient

**Eluent A:** 0.1% TFA in Water

**Eluent B:** 90% ACN 0.09% TFA in Water

Gradient Profile:	Step No.	Time (min)	Pct A	Pct B
	1	0	80	20
	2	25	45	55

**Flow Rate:** 1 mL/min

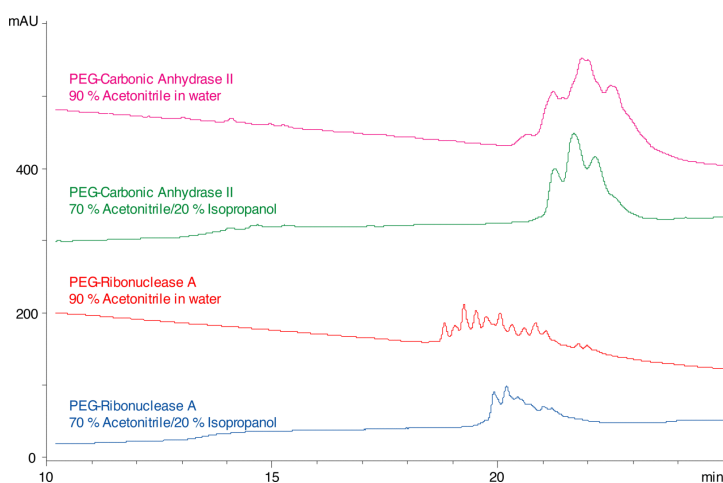
**Col. Temp.:** 45 °C

**Detection:** UV-Vis Abs.-Variable Wave.(UV) @ 214 nm (ambient)

**Analyst Note:** Reversed phase runs of PEGylated carbonic anhydrase and PEGylated ribonuclease A using different organic mobile phase compositions. In other applications, the addition of isopropanol does not improve resolution of different PEGylated forms.



Products used in this application:



### ANALYTES:

- 1 PEGylated Carbonic anhydrase or PEGylated Ribonuclease A

