

Jupiter® 300 C4 - Effect of Varying Mobile Phase Gradient Conditions

Column: Jupiter® 5 µm C4 300 Å, LC Column 150 x 4.6 mm, Ea

Dimensions: 150 x 4.6 mm ID

Order No: 00F-4167-E0

Elution Type: Gradient

Eluent A: 0.1% TFA in Water

Eluent B: 90% ACN 0.09% TFA in Water

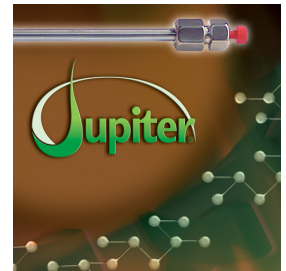
Gradient Profile:	Step No.	Time (min)	Pct A	Pct B
	1	0	80	20
	2	25	45	55

Flow Rate: 1 mL/min

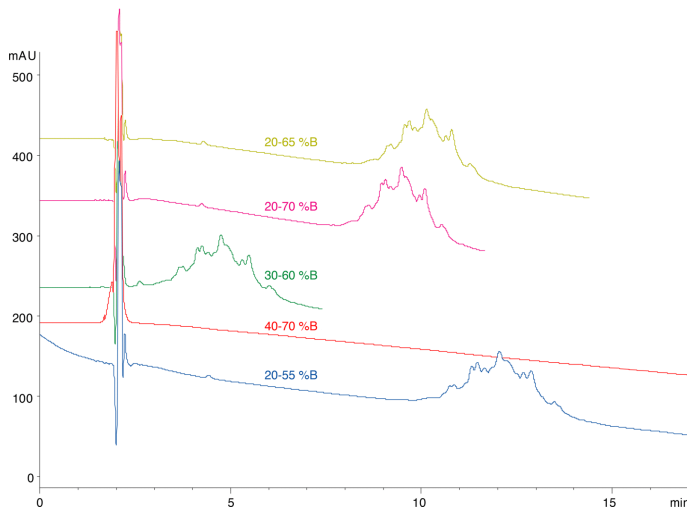
Col. Temp.: 45 °C

Detection: UV-Vis Abs.-Variable Wave.(UV) @ 214 nm (ambient)

Analyst Note: Reversed phase runs of PEGylated ribonuclease A using different gradient conditions on a Jupiter 300 C4 column (gradient length = 5 min) show that if initial %B is increased much above 25% then retention and resolution of PEGylated forms is lost. Gradient slopes of 1 between 2% /min



Products used in this application:



ANALYTES:

- 1 PEGylated Ribonuclease A

