

GC Application

ID No.: 16221

EPA 8081: Toxaphene on ZB-MR1

Column: Zebtron[™] ZB-MultiResidue[™]-1, GC Cap. Column 30 m x 0.53 mm x 0.50 μ m, Ea

Phase: Unknown or Proprietary

Dimensions: 30 meters x 0.53 mm x 0.5 μ m

Order No: 7HK-G016-17

Oven Profile: 125 °C for 0.5 min to 320 °C at 15 °C/min for 5 min

Carrier Gas: Constant Flow Helium, 5 mL/min

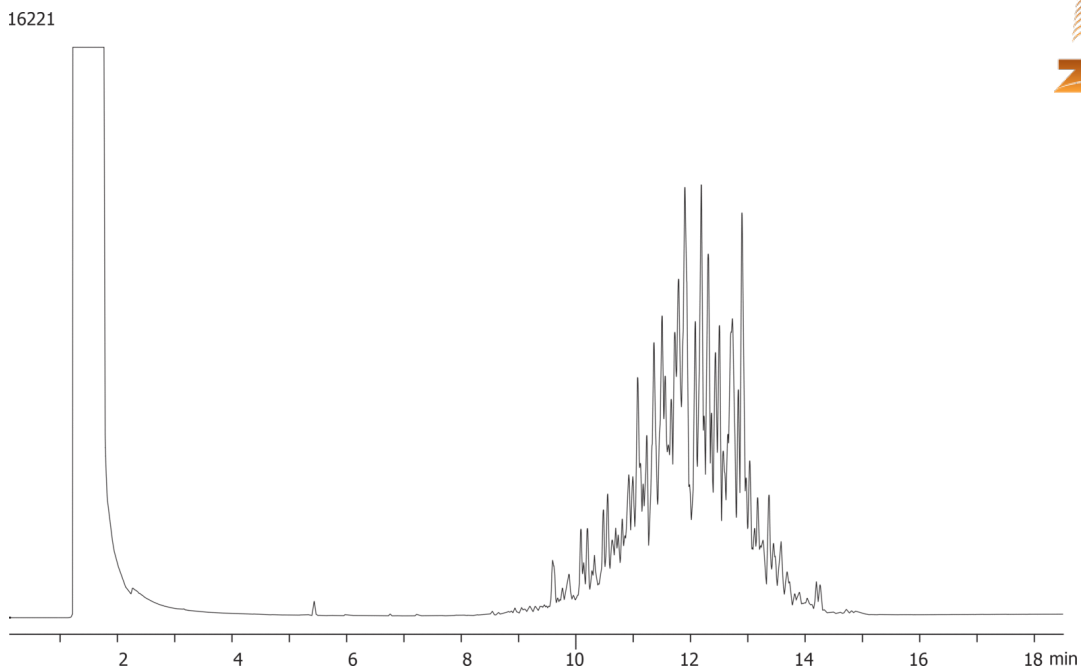
Injection: Splitless :1 1 μ L @ 280°C

Detection: Electron Capture (ECD) (320°C)

Analyst Note: Toxaphene is 25ppm.



Products used in this application:



ANALYTES:

- 1 Toxaphene

