

GC Application

ID No.: 16228

Halocarbons on ZB-5MS

Column: Zebtron[™] ZB-5MS, GC Cap. Column 30 m x 0.32 mm x 1.00 µm, Ea

Phase: 5% Phenyl-Arylene 95% Dimethylpolysiloxane

Dimensions: 30 meters x 0.32 mm x 1 µm

Order No: 7HM-G010-22

Oven Profile: 40 °C for 6 min to 200 °C @ 22 °C/min

Carrier Gas: Constant Flow Helium, 1.5 mL/min

Injection: Split 10:1 1 µL @ 200°C

Detection: Mass Selective (MSD) (200°C)

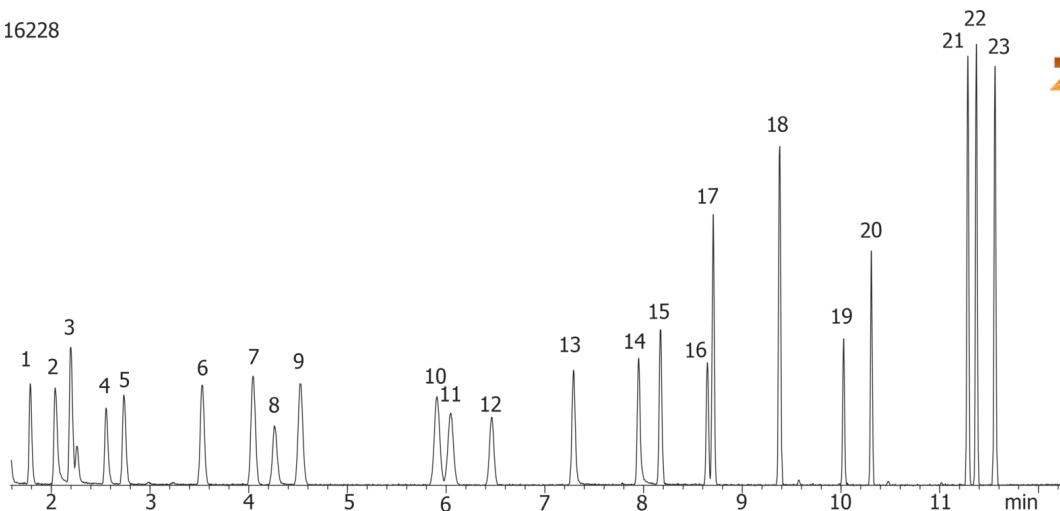
Analyst Note: The analytes are 100 ppm in methanol.



Products used in this application:



16228



Halocarbons on ZB-5MS

ANALYTES:

- 1 Trichlorofluoromethane
- 2 1,1-Dichloroethene
- 3 Dichloromethane
- 4 1,2-Dichloroethene
- 5 1,1-Dichloroethane
- 6 Chloroform
- 7 1,1,1-Trichloroethane
- 8 1,2-Dichloroethane
- 9 Carbon tetrachloride
- 10 Trichloroethylene
- 11 1,2-Dichloropropane
- 12 Bromodichloromethane
- 13 cis-1,3-Dichloro-1-propene
- 14 trans-1,3-Dichloro-1-propene
- 15 1,1,2-Trichloroethane
- 16 Dibromochloromethane
- 17 Tetrachloroethylene
- 18 Chlorobenzene
- 19 Tribromomethane
- 20 1,1,2,2-Tetrachloroethane
- 21 1,3-Dichlorobenzene
- 22 1,4-Dichlorobenzene
- 23 1,2-Dichlorobenzene

