

GC Application

ID No.: 16231

Rosemary Oil on ZB-1MS

Column: Zebtron[™] ZB-1MS, GC Cap. Column 30 m x 0.25 mm x 0.25 µm, Ea

Phase: 100% Dimethylpolysiloxane

Dimensions: 30 meters x 0.25 mm x 0.25 µm

Order No: 7HG-G011-11

Oven Profile: 40 °C for 4 min to 100 °C at 5 °C/min to 190 °C at 20 °C/min

Carrier Gas: Constant Flow Helium, 1.5 mL/min

Injection: On-Column :1 0.1 µL @ 43°C

Detection: Mass Selective (MSD) (240°C)

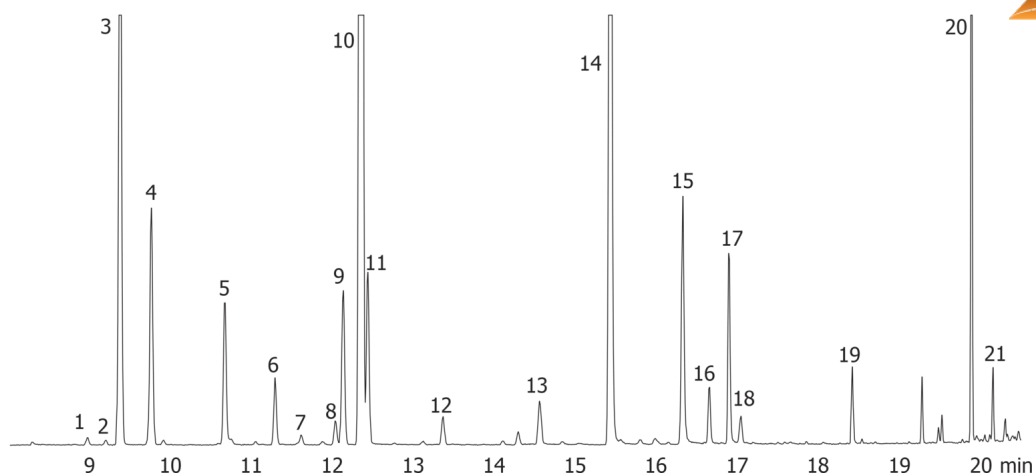
Analyst Note: Sample was 300 ppm Rosemary oil in Ethyl Acetate.



Products used in this application:



16231



Rosemary Oil on ZB-1MS

ANALYTES:

- 1 Tricyclene
- 2 α -Thujene
- 3 α -Pinene
- 4 Camphene
- 5 β -Pinene
- 6 Myrcene
- 7 α -Phellandrene
- 8 α -Terpinene
- 9 p-Cymene
- 10 1,8-Cineol
- 11 Limonene
- 12 γ -Terpinene
- 13 Linalool
- 14 Camphor
- 15 Borneol
- 16 Terpinen-4-ol
- 17 α -Terpineol
- 18 Verbenone
- 19 Bornyl acetate
- 20 β -Caryophyllene
- 21 α -Caryophyllene

