

Expanded Chlorinated Pesticides on ZB-MR1

Column: Zebtron™ ZB-MultiResidue™-1, GC Cap. Column 30 m x 0.32 mm x 0.50 μm, Ea

Phase: Proprietary Pesticides Phase

Dimensions: 30 meters x 0.32 mm x 0.5 μm

Order No: 7HM-G016-17

Oven Profile: 100 °C for 0.5 min to 180 °C at 35 °C/min to 340 °C at 10 °C/min for 4min

Carrier Gas: Constant Flow Helium, 1.8 mL/min

Injection: On-Column :1 0.5 μL @ 103°C

Detection: Electron Capture (ECD) (340°C)

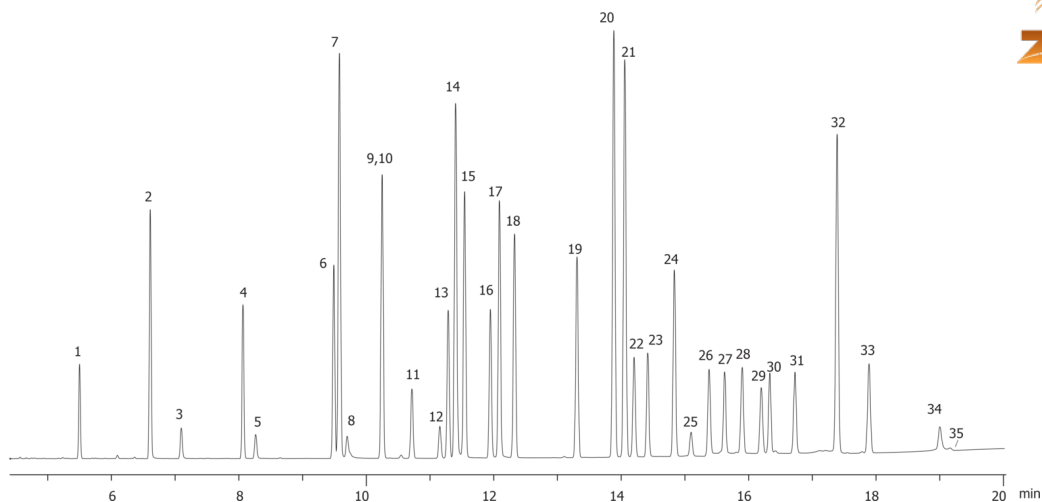
Analyst Note: Analytes of varying concentration at or near 50ppb.



Products used in this application:



16240



Expanded Chlorinated Pesticides on ZB-MR1

ANALYTES:

- 1 Hexachlorocyclopentadiene
- 2 Etridiazole
- 3 Chloroneb
- 4 Trifluralin
- 5 Propachlor
- 6 alpha-BHC
- 7 Hexachlorobenzene
- 8 Atrazine
- 9 gamma-BHC
- 10 Simazine
- 11 b-BHC
- 12 Alachlor
- 13 delta-BHC
- 14 Chlorothalonil
- 15 Heptachlor
- 16 Chlorpyrifos
- 17 Dacthal
- 18 Aldrin
- 19 Heptachlor epoxide
- 20 trans-Chlordane
- 21 cis-Chlordane
- 22 Endosulfan I
- 23 4,4'-DDE
- 24 Dieldrin
- 25 Chlorobenzilate
- 26 Endrin
- 27 4,4'-DDD
- 28 Endosulfan II
- 29 Endrin aldehyde
- 30 4,4'-DDT
- 31 Endosulfan sulfate
- 32 Methoxychlor
- 33 Endrin ketone
- 34 Permethrin
- 35 Permethrin

