

GC Application

ID No.: 16242

Lavender Oil on ZB-1

Column: Zebtron™ ZB-1, GC Cap. Column 30 m x 0.25 mm x 0.25 μm, Ea

Phase: 100% Dimethylpolysiloxane

Dimensions: 30 meters x 0.25 mm x 0.25 μm

Order No: 7HG-G001-11

Oven Profile: 40 °C for 1 min to 190 °C at 5 °C/min for 3 min

Carrier Gas: Constant Flow Helium, 1.5 mL/min

Injection: On-Column :1 0.1 μL @ 43°C

Detection: Mass Selective (MSD) (240°C)

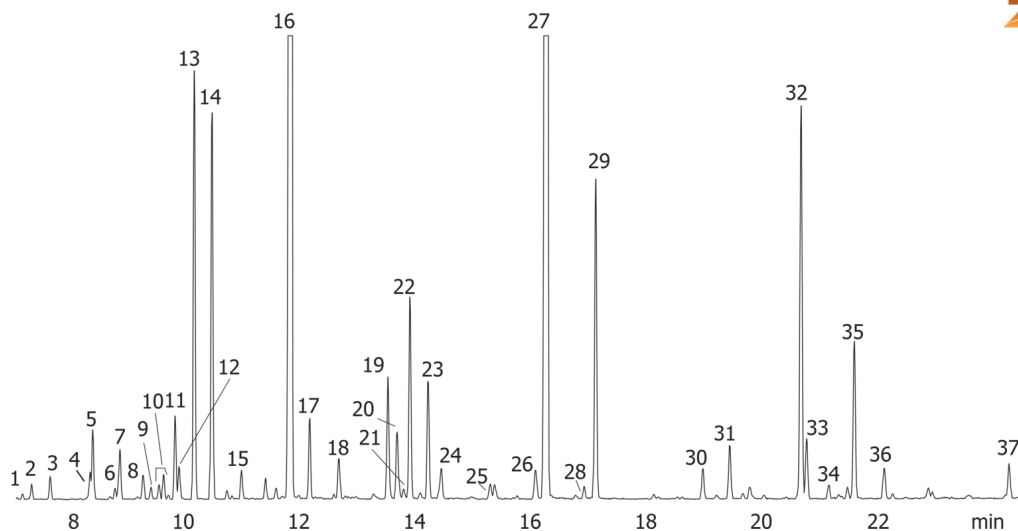
Analyst Note: 1000ppm Lavender oil in ethyl acetate



Products used in this application:



16242



Lavender Oil on ZB-1

ANALYTES:

- 1 α -Thujene
- 2 α -Pinene
- 3 Camphene
- 4 1-Octen-3-ol
- 5 3-Octanone
- 6 Butyl butyrate
- 7 beta-Myrcene
- 8 Hexyl acetate
- 9 3-Carene
- 10 Cymene
- 11 Eucalyptol
- 12 Limonene
- 13 trans-Ocimene
- 14 cis-Ocimene
- 15 Linalool oxide
- 16 Linalool
- 17 Octen-1-ol acetate
- 18 Camphor
- 19 Borneol
- 20 Lavandulol
- 21 p-Cymene-8-ol
- 22 4-Terpineol
- 23 α -Terpineol
- 24 Hexyl butyrate
- 25 Bornyl formate
- 26 Geranyl alcohol
- 27 Linalyl acetate
- 28 Bornyl acetate
- 29 Lavandulyl acetate
- 30 Neryl acetate
- 31 Geranyl acetate
- 32 b-Caryophyllene
- 33 α -Santalene
- 34 alpha-Bergamotene
- 35 beta-Farnesene
- 36 Germacrene D
- 37 Caryophyllene oxide

