

GC Application

ID No.: 16247

Industrial Chemicals: Alcohols on ZB-WAX

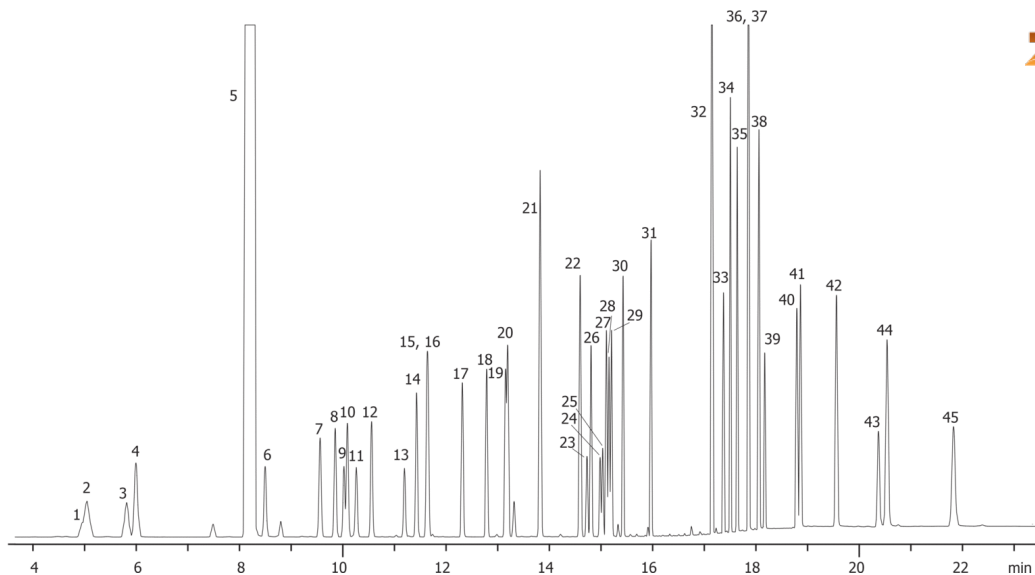
Column: Zebron[™] ZB-WAX, GC Cap. Column 30 m x 0.53 mm x 1.00 μ m, Ea
Phase: Polyethylene Glycol (PEG)
Dimensions: 30 meters x 0.53 mm x 1 μ m
Order No: 7HK-G007-22
Oven Profile: 35 °C for 5 min to 130 °C at 10 °C/min. to 210 °C at 30 °C/min. for 10 min.
Carrier Gas: Constant Flow Helium, 4.7 mL/min
Injection: Split 10:1 1 μ L @ 200°C
Detection: Flame Ionization (FID) (220°C)
Analyst Note: Concentration per analyte 100 ppm.



Products used in this application:



16247



Industrial Chemicals: Alcohols on ZB-WAX

ANALYTES:

1	Methanol	41	3-Phenyl-1-propanol
2	tert-Butanol	42	1-Tetradecanol
3	Isopropanol	43	1,7-Heptanediol
4	Ethanol	44	1-Pentadecanol
5	Chloroform	45	1-Hexadecanol
6	1-Propanol		
7	2-Methylpropanol		
8	3-Pentanol		
9	Allyl alcohol		
10	2-Pentanol		
11	1-Methoxy-2-propanol		
12	1-Butanol		
13	2-Methoxyethanol		
14	3-Hexanol		
15	3-Methylbutanol		
16	Methallyl alcohol		
17	1-Pentanol		
18	4-Heptanol		
19	Cyclopentanol		
20	2-Ethyl-1-butanol		
21	1-Hexanol		
22	Cyclohexanol		
23	2-Methylcyclohexanol		
24	2-Methylcyclohexanol		
25	3-Methylcyclohexanol		
26	4-Methylcyclohexanol		
27	1-Heptanol		
28	3-Methylcyclohexanol		
29	4-Methylcyclohexanol		
30	2-Ethyl-1-hexanol		
31	1-Octanol		
32	1-Decanol		
33	2-(2-Butoxyethoxy)ethanol		
34	1-Phenylethanol		
35	1-Undecanol		
36	Benzyl alcohol		
37	Phenylmethanol		
38	2-Phenylethanol		
39	1-Dodecanol		
40	1-Tridecanol		

