

TMS Sugars on ZB-MR1

Column: Zebtron[™] ZB-MultiResidue[™]-1, GC Cap. Column 30 m x 0.25 mm x 0.25 μ m, Ea

Phase: Proprietary Pesticides Phase

Dimensions: 30 meters x 0.25 mm x 0.25 μ m

Order No: 7HG-G016-11

Oven Profile: 200 °C for 6 min.

Carrier Gas: Constant Flow Helium, 2 mL/min

Injection: Split 100:1 1 μ L @ 225°C

Detection: Flame Ionization (FID) (250°C)

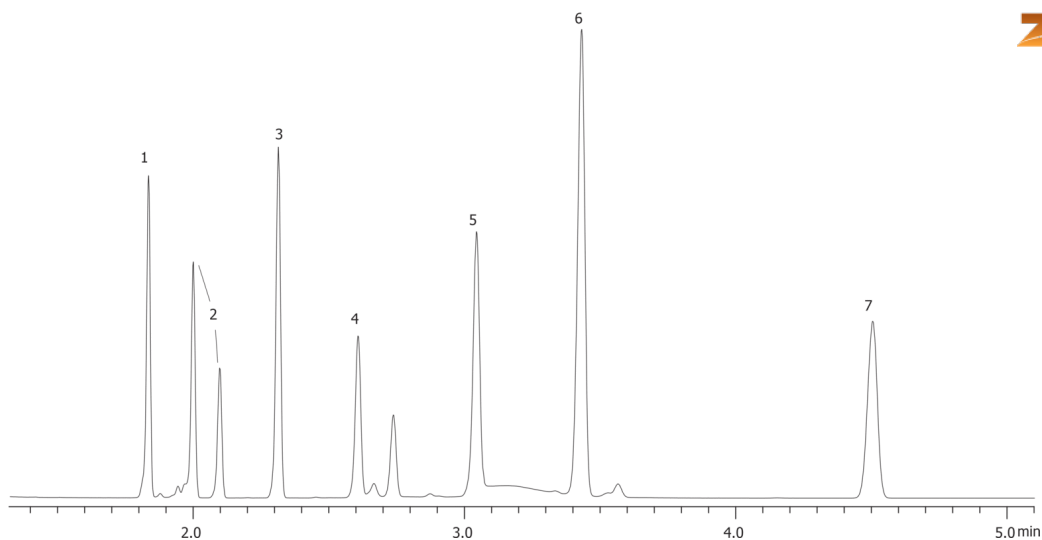
Analyst Note: Sugar mix concentration 176 ppm. Sample was blown dry and then reconstituted in 100 μ L of 1:1



Products used in this application:



16248



ANALYTES:

- 1 D-(-)-Arabinose
- 2 d-Ribose
- 3 d-Xylose
- 4 D-Mannose
- 5 D-(+)-Galactose
- 6 alpha-d-Glucose
- 7 beta-D-(+)-Glucose

