

BTEXs on ZB-MR1

Column: Zebtron[™] ZB-MultiResidue[™]-1, GC Cap. Column 30 m x 0.25 mm x 0.25 μ m, Ea

Phase: Unknown or Proprietary

Dimensions: 30 meters x 0.25 mm x 0.25 μ m

Order No: 7HG-G016-11

Oven Profile: 75 °C to 150 °C at 20 °C/min.

Carrier Gas: Constant Flow Helium, 1 mL/min

Injection: Split 200:1 0.5 μ L @ 150°C

Detection: Flame Ionization (FID) (200°C)

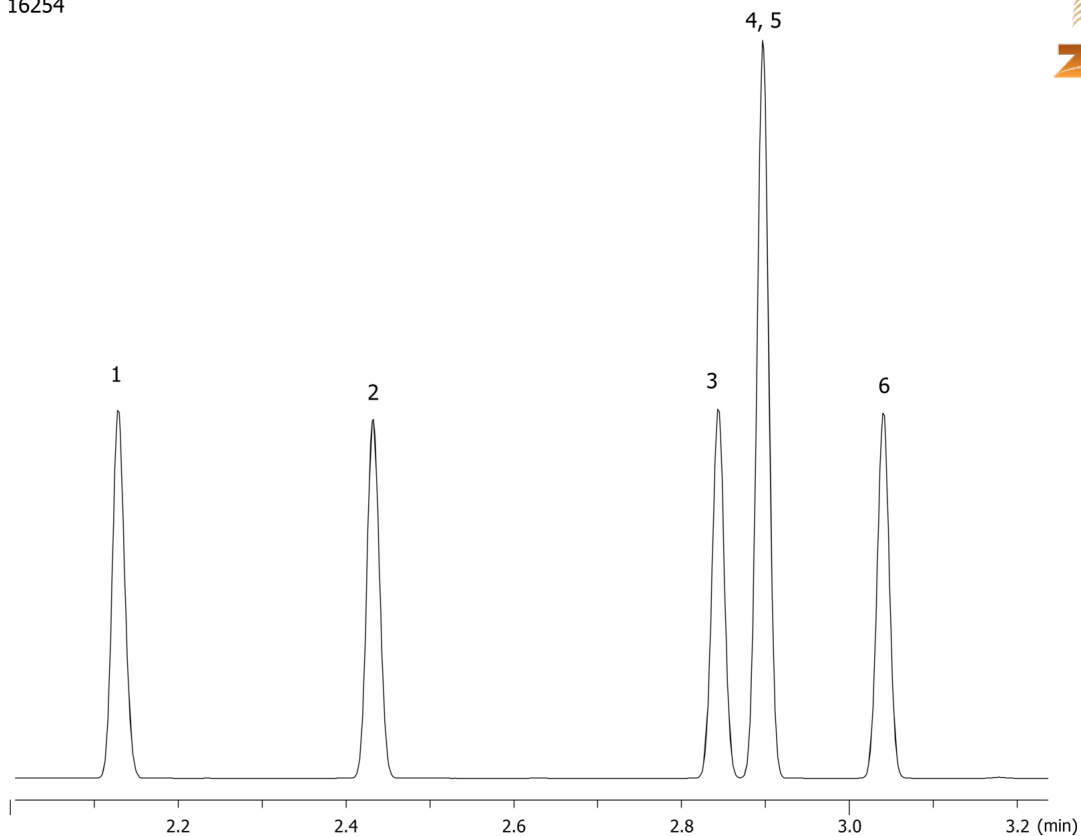
Analyst Note: Analytes are 5 mg/mL in Methanol



Products used in this application:



16254



ANALYTES:

- 1 Benzene
- 2 Toluene
- 3 Ethylbenzene
- 4 m-Xylene
- 5 p-Xylene
- 6 o-Xylene

