

GC Application

ID No.: 16275

EPA Method 8270C on ZB-MR1

Column: Zebtron™ ZB-MultiResidue™-1, GC Cap. Column 30 m x 0.25 mm x 0.25 μm, Ea

Phase: Proprietary Pesticides Phase

Dimensions: 30 meters x 0.25 mm x 0.25 μm

Order No: 7HG-G016-11

Oven Profile: 40°C for 2 min to 85°C at 10°C/min to 320°C at 20°C/min for 5 min

Carrier Gas: Constant Flow Helium, 1.3 mL/min

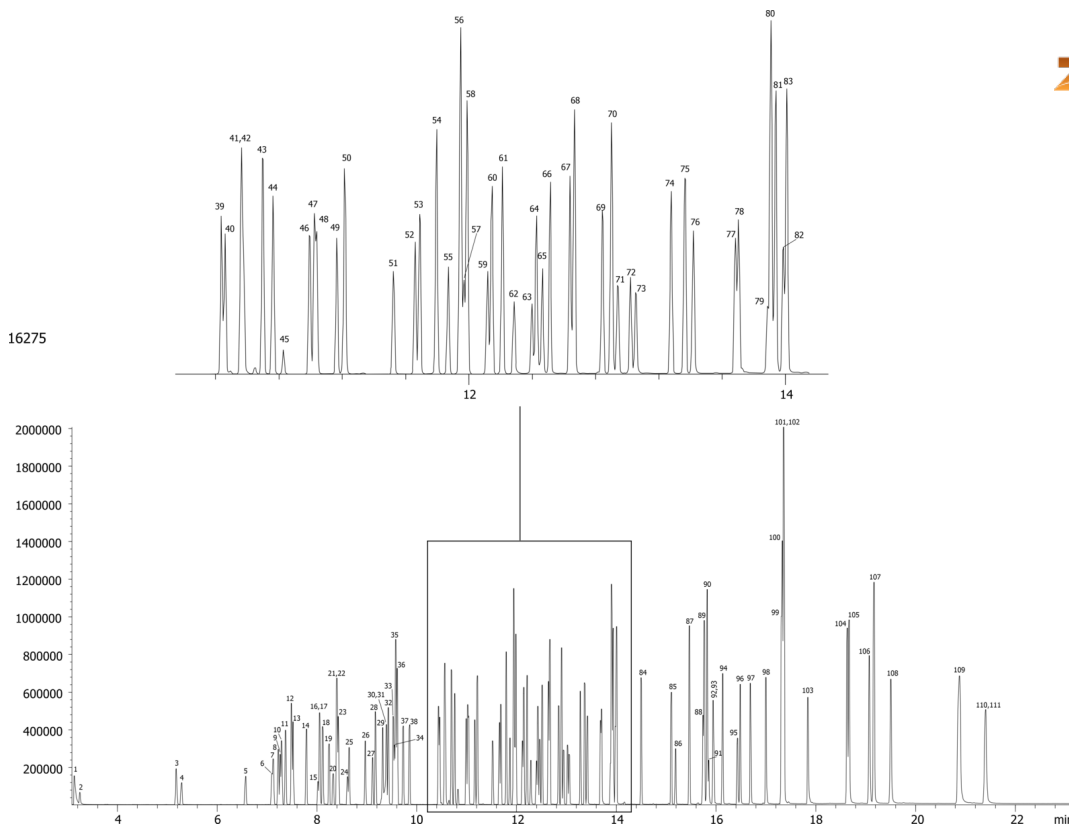
Injection: Split 10:1 2 μL @ 240°C

Detection: Mass Selective (MSD) (230°C)

Analyst Note: 25ppm 8270C mix in Methylene chloride



Products used in this application:



EPA Method 8270C on ZB-MR1**ANALYTES:**

1 Pyridine	41 2-Methylnaphthalene	81 Phenanthrene
2 N-Nitrosodimethylamine	42 Hexachlorocyclopentadiene	82 Dinoseb
3 Methylmethane sulfonate	43 1-Methylnaphthalene	83 Anthracene
4 2-Fluorophenol	44 1,2,4,5-Tetrachlorobenzene	84 Di-n-butyl phthalate
5 Ethylmethanesulfonate	45 Safrole	85 Isodrin
6 Phenol	46 2,4,6-Trichlorophenol	86 4-Nitroquinoline-n-oxide
7 Phenol-d6	47 2,4,5-Trichlorophenol	87 Fluoranthene
8 bis(2-Chloroethyl)ether	48 2-Fluorobiphenyl	88 Pyrene-d10
9 Aniline	49 Safrole	89 Pyrene
10 2-Chlorophenol	50 2-Chloronaphthalene	90 Benzidine
11 1,3-Dichlorobenzene	51 2-Nitroaniline	91 Aramite
12 1,4-Dichlorobenzene-d4	52 1,4-Naphthoquinone	92 Aramite
13 1,4-Dichlorobenzene	53 Dimethylphthalate	93 p-Terphenyl-d14
14 1,2-Dichlorobenzene	54 Acenaphthalene	94 Chlorobenzilate
15 Bis(2-Chloroisopropyl)ether	55 2,6-Dinitrotoluene	95 Kepone
16 bis(2-Chloroisopropyl)ether	56 Acenaphthene-d10	96 Benzylbutylphthalate
17 Benzyl alcohol	57 1,3-Dinitrobenzene	97 3,3-Dimethylbenzidine
18 2-Methylphenol	58 3-Nitroaniline	98 Bis(2-Ethylhexyl)phthalate
19 Hexachloroethane	59 Acenaphthene	99 Chrysene
20 N-Nitrosodipropylamine	60 Pentachlorobenzene	100 Chrysene-d12
21 3-Methylphenol	61 Dibenzofuran	101 3,3-Dichlorobenzidine
22 Acetophenone	62 4-Nitrophenol	102 Benz[a]anthracene
23 4-Methylphenol	63 2,4-Dinitrophenol	103 Di-n-octylphthalate
24 Nitrobenzene-d5	64 2,3,4,6-Tetrachlorophenol	104 Benzo[b]fluoranthene
25 Nitrobenzene	65 2,4-Dinitrotoluene	105 Benzo[k]fluoranthene
26 Isophorone	66 Diethylphthalate	106 Benzo[a]pyrene
27 2-Nitrophenol	67 4-Chlorophenylphenylether	107 Perylene-d12
28 2,4-Dimethylphenol	68 Fluorene	108 3-Methylcholanthrene
29 bis(2-Chloroethoxy)ether	69 Azobenzene	109 Indeno[1,2,3-cd]pyrene
30 Benzoic acid	70 Diphenylamine	110 Dibenz[a,h]anthracene
31 2,4-Dichlorophenol	71 4-Nitroaniline	111 Benzo[g,h,i]perylene
32 1,2,4-Trichlorobenzene	72 2,4,6-Tribromophenol	
33 Hexachlorobutadiene	73 2-Methyl-4,6-dinitrophenol	
34 Hexachloropropane	74 4-Bromophenyl phenyl ether	
35 Naphthalene-d8	75 Hexachlorobenzene	
36 Naphthalene	76 Phenacetin	
37 2,6-Dichlorophenol	77 Pentachlorophenol	
38 4-Chloroaniline	78 Pentachloronitrobenzene	
39 Isosafrole	79 1,3,5-Trinitrobenzene	
40 4-Chloro-3-methylphenol	80 Phenanthrene-d10	

