

EPA 8081 with Pentachlorophenol on ZB-MR1

Column: Zebtron™ ZB-MultiResidue™-1, GC Cap. Column 30 m x 0.32 mm x 0.50 μm, Ea

Phase: Unknown or Proprietary

Dimensions: 30 meters x 0.32 mm x 0.5 μm

Order No: 7HM-G016-17

Oven Profile: 100 °C for 0.5 min to 220 °C at 35 °C/min to 340 °C at 20 °C/min for 2 min

Carrier Gas: Constant Flow Helium, 3.2 mL/min

Injection: On-Column :1 1 μL @ 103°C

Detection: Electron Capture (ECD) (340°C)

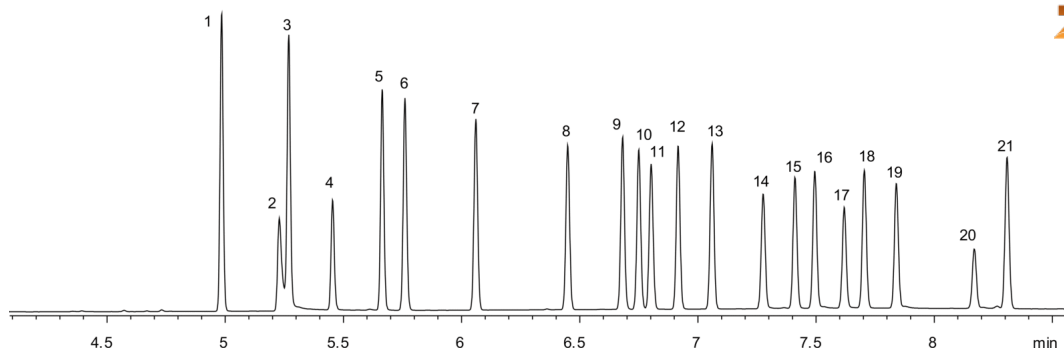
Analyst Note: Analytes are 50ppb in Isooctane. A 0.5 m 0.32 mm guard was used with a 'Y' splitter to connect columns to the



Products used in this application:



16276



EPA 8081 with Pentachlorophenol on ZB-MR1

ANALYTES:

- 1 alpha-BHC
- 2 Pentachlorophenol
- 3 gamma-BHC
- 4 b-BHC
- 5 delta-BHC
- 6 Heptachlor
- 7 Aldrin
- 8 Heptachlor epoxide
- 9 trans-Chlordane
- 10 cis-Chlordane
- 11 Endosulfan I
- 12 4,4'-DDE
- 13 Dieldrin
- 14 Endrin
- 15 4,4'-DDD
- 16 Endosulfan II
- 17 Endrin aldehyde
- 18 4,4'-DDT
- 19 Endosulfan sulfate
- 20 Methoxychlor
- 21 Endrin ketone

