

GC Application

ID No.: 16279

EPA Methods 508 and 8081A on ZB-MR1

Column: Zebron[™] ZB-MultiResidue[™]-1, GC Cap. Column 30 m x 0.32 mm x 0.50 μm, Ea

Phase: Proprietary Pesticides Phase

Dimensions: 30 meters x 0.32 mm x 0.5 μm

Order No: 7HM-G016-17

Oven Profile: 120 °C for 0.5 min to 210 °C at 30 °C/min to 300 °C at 6 °C/min for 2 min

Carrier Gas: Constant Flow Helium, 1.2 mL/min

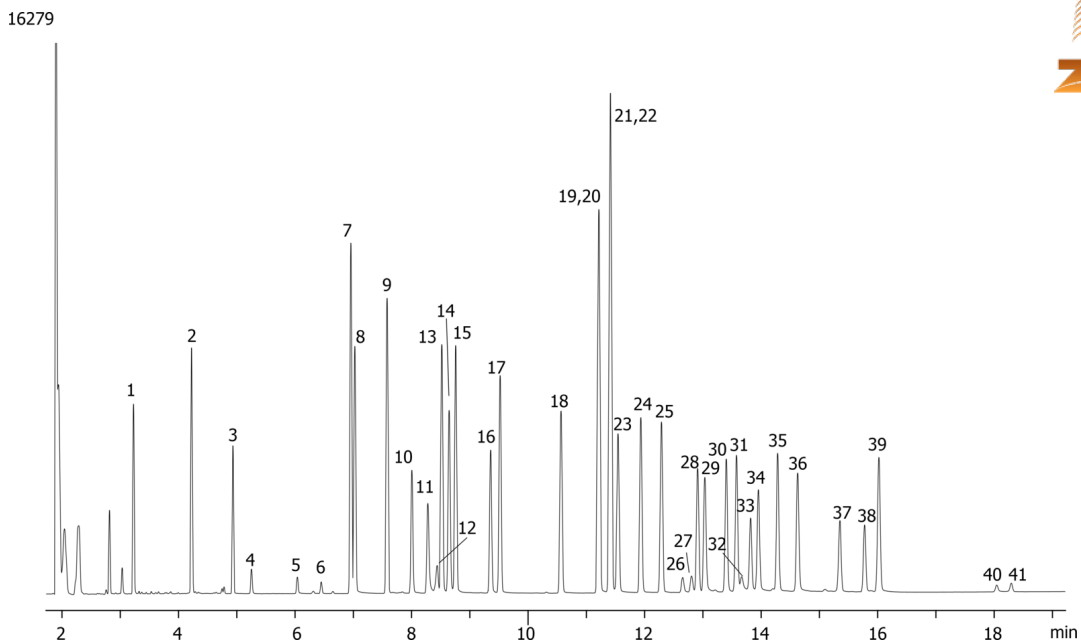
Injection: On-Column :1 1 μL @ 123°C

Detection: Electron Capture (ECD) (340°C)

Analyst Note: All analytes are 50ppb in isoctane.



Products used in this application:



EPA Methods 508 and 8081A on ZB-MR1

ANALYTES:

- | | | | |
|----|---------------------------|----|------------|
| 1 | DBCP | 41 | Permethrin |
| 2 | Hexachlorocyclopentadiene | | |
| 3 | Etridiazole | | |
| 4 | Chloroneb | | |
| 5 | Propachlor | | |
| 6 | Di-allate | | |
| 7 | alpha-BHC | | |
| 8 | Hexachlorobenzene | | |
| 9 | gamma-BHC | | |
| 10 | b-BHC | | |
| 11 | Dichlone | | |
| 12 | Alachlor | | |
| 13 | delta-BHC | | |
| 14 | Chlorothalonil | | |
| 15 | Heptachlor | | |
| 16 | Dacthal | | |
| 17 | Aldrin | | |
| 18 | Heptachlor epoxide | | |
| 19 | Captan | | |
| 20 | trans-Chlordane | | |
| 21 | cis-Chlordane | | |
| 22 | trans-Nonachlor | | |
| 23 | Endosulfan I | | |
| 24 | 4,4'-DDE | | |
| 25 | Dieldrin | | |
| 26 | Chloropropylate | | |
| 27 | Chlorobenzilate | | |
| 28 | Endrin | | |
| 29 | Nitrofen | | |
| 30 | 4,4'-DDD | | |
| 31 | Endosulfan II | | |
| 32 | Kepone | | |
| 33 | Trithion | | |
| 34 | Endrin aldehyde | | |
| 35 | 4,4'-DDT | | |
| 36 | Endosulfan sulfate | | |
| 37 | Captafol | | |
| 38 | Methoxychlor | | |
| 39 | Endrin ketone | | |
| 40 | Permethrin | | |

