

EPA Methods 508 and 8081A on ZB-MR2

Column: Zebtron™ ZB-MultiResidue™-2, GC Cap. Column 30 m x 0.32 mm x 0.25 µm, Ea

Phase: Proprietary Pesticides Phase

Dimensions: 30 meters x 0.32 mm x 0.25 µm

Order No: 7HM-G017-11

Oven Profile: 120 °C for 0.5 min to 210 °C at 30 °C/min to 300 °C at 6 °C/min for 2 min

Carrier Gas: Constant Flow Helium, 1.2 mL/min

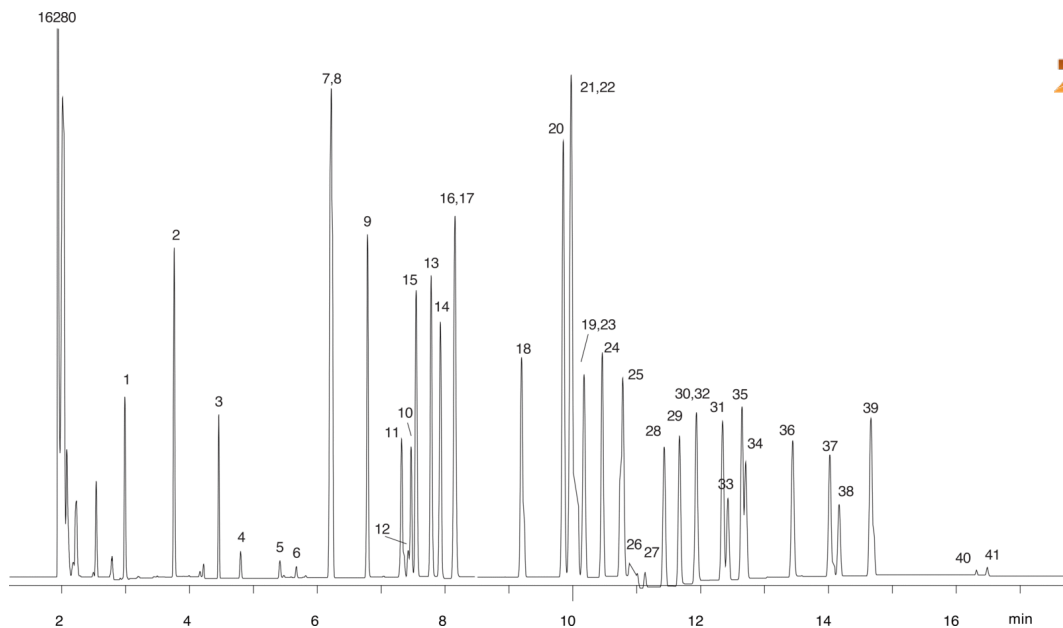
Injection: On-Column :1 1 µL @ 123°C

Detection: Electron Capture (ECD) (340°C)

Analyst Note: All analytes are 50ppb in isoctane.



Products used in this application:



EPA Methods 508 and 8081A on ZB-MR2

ANALYTES:

- | | |
|------------------------------------|----------------------|
| 1 DBCP | 41 Permethrin |
| 2 Hexachlorocyclopentadiene | |
| 3 Etridiazole | |
| 4 Chloroneb | |
| 5 Propachlor | |
| 6 Di-allate | |
| 7 alpha-BHC | |
| 8 Hexachlorobenzene | |
| 9 gamma-BHC | |
| 10 b-BHC | |
| 11 Dichlone | |
| 12 Alachlor | |
| 13 delta-BHC | |
| 14 Chlorothalonil | |
| 15 Heptachlor | |
| 16 Dacthal | |
| 17 Aldrin | |
| 18 Heptachlor epoxide | |
| 19 Captan | |
| 20 trans-Chlordane | |
| 21 cis-Chlordane | |
| 22 trans-Nonachlor | |
| 23 Endosulfan I | |
| 24 4,4'-DDE | |
| 25 Dieldrin | |
| 26 Chloropropylate | |
| 27 Chlorobenzilate | |
| 28 Endrin | |
| 29 Nitrofen | |
| 30 4,4'-DDD | |
| 31 Endosulfan II | |
| 32 Kepone | |
| 33 Trithion | |
| 34 Endrin aldehyde | |
| 35 4,4'-DDT | |
| 36 Endosulfan sulfate | |
| 37 Captafol | |
| 38 Methoxychlor | |
| 39 Endrin ketone | |
| 40 Permethrin | |

