

HPLC Application

ID No.: 16282

Luna 2.5µm C18(2)-HST - Increasing Speed with No Loss in Resolution

Column: Luna® 2.5 µm C18(2) 100 Å, LC Column 50 x 2 mm, Ea

Dimensions: 50 x 2 mm ID

Order No: 00B-4446-B0

Elution Type: Gradient

Eluent A: Water

Eluent B: Acetonitrile

Gradient Profile:	Step No.	Time (min)	Pct A	Pct B
	1	0	90	10
	2	0.5	90	10
	3	15	5	95
	4	22	5	95
	5	22.1	90	10

Flow Rate: 1 mL/min

Col. Temp.: ambient

Detection: UV-Vis Abs.-Variable Wave.(UV) @ 270 nm (ambient)

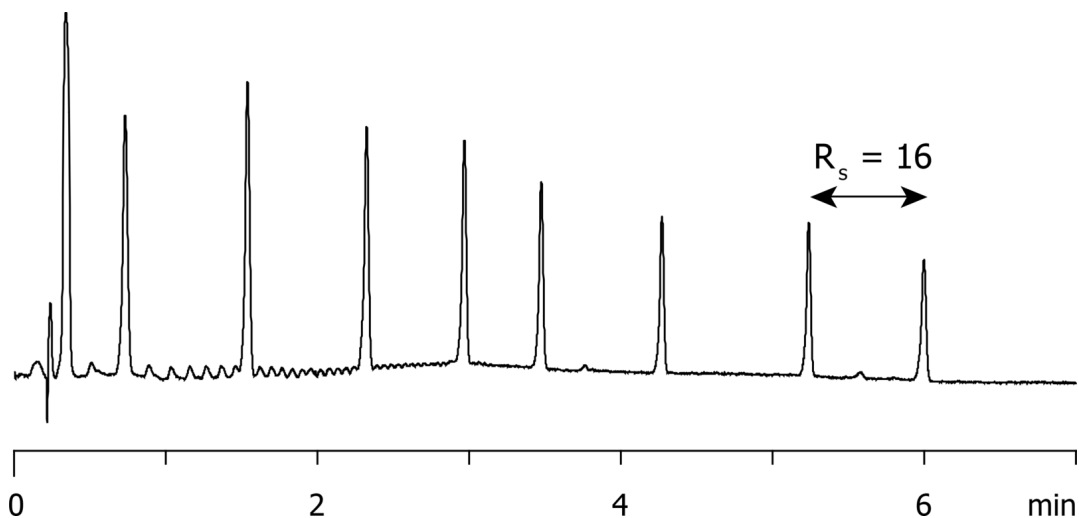
Detector Info: NEED CORRECT GRADIENT CONDITIONS

mixture of 9 ketones (C3 -C16)

HP1100



Products used in this application:



ANALYTES:

- 1 Acetone
- 2 2-Butanone
- 3 2-Pentanone
- 4 2-Hexanone
- 5 2-Heptanone
- 6 2-Octanone
- 7 2-Decanone
- 8 2-Tridecanone
- 9 2-Hexadecanone

