

HPLC Application

ID No.: 16298

Positional Isomers of Methylacetophenone on Luna 3 μ m PFP(2) 150 x 4.6mm ID

Column: Luna[®] 3 μ m PFP(2) 100 Å, LC Column 150 x 4.6 mm, Ea

Dimensions: 150 x 4.6 mm ID

Order No: 00F-4447-E0

Elution Type: Isocratic

Eluent A: Water

Eluent B: Methanol

Gradient Profile:	Step No.	Time (min)	Pct A	Pct B
	1	0	50	50

Flow Rate: 1 mL/min

Col. Temp.: ambient

Detection: UV-Vis Abs.-Variable Wave.(UV) @ 254 nm (ambient)

Detector Info: Average Rs = 2.06

Analyst Note: SecurityGuard[™] Guard Cartridge System extends column lifetime.

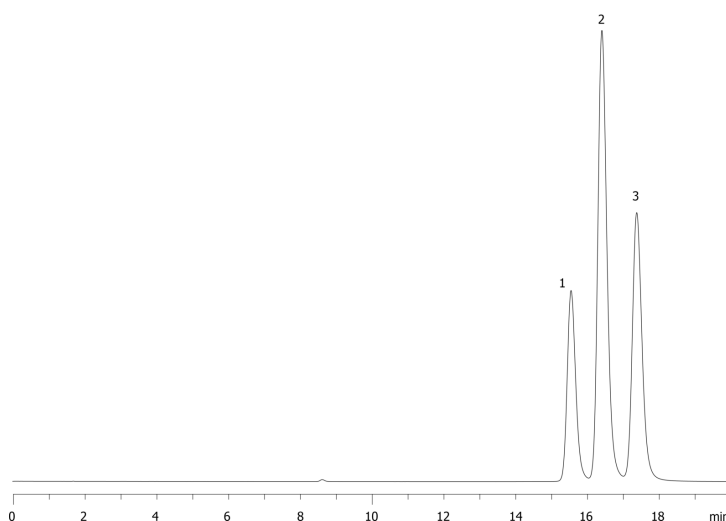
- SecurityGuard Cartridges, PFP 4 x 3.0 mm, 10/Pk Part No.: AJ0-8327

- Holder Part No.: KJ0-4282

16298



Products used in this application:



ANALYTES:

- 1** o-Methylacetophenone
Retention Time: 15.561 min
- 2** p-Methylacetophenone
Retention Time: 16.421 min
- 3** m-Methylacetophenone
Retention Time: 17.391 min

