

HPLC Application

ID No.: 16299

Positional Isomers of Methylacetophenone on Luna 3µm C18(2) 150 x 4.6mm ID

Column: Luna® 3 µm C18(2) 100 Å, LC Column 150 x 4.6 mm, Ea

Dimensions: 150 x 4.6 mm ID

Order No: 00F-4251-E0

Elution Type: Isocratic

Eluent A: Water

Eluent B: Methanol

| Gradient Profile: | Step No. | Time (min) | Pct A | Pct B |
|-------------------|----------|------------|-------|-------|
| | 1 | 0 | 50 | 50 |

Flow Rate: 1 mL/min

Col. Temp.: ambient

Detection: UV-Vis Abs.-Variable Wave.(UV) @ 254 nm (ambient)

Analyst Note: SecurityGuard™ Guard Cartridge System extends column lifetime.

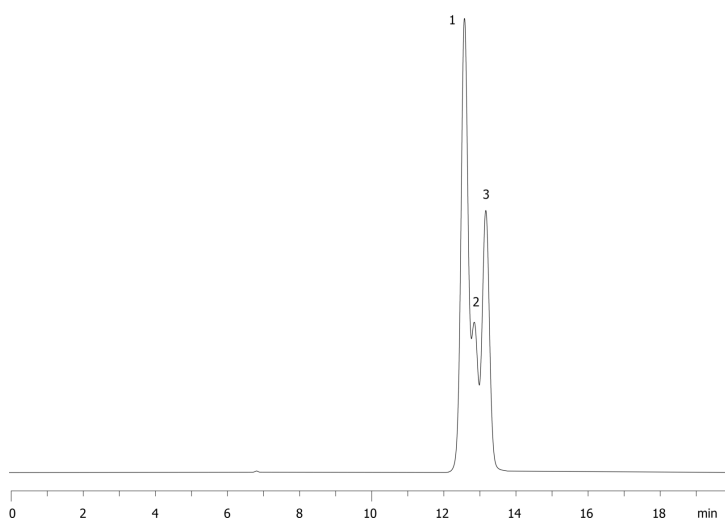
- SecurityGuard Cartridges, C18 4 x 3.0mm, 10/Pk Part No.: AJ0-4287

- Holder Part No.: KJ0-4282

16299



Products used in this application:



ANALYTES:

- 1** p-Methylacetophenone
Retention Time: 12.637 min
- 2** o-Methylacetophenone
Retention Time: 12.908 min
- 3** m-Methylacetophenone
Retention Time: 13.228 min

