

GC Application

ID No.: 16307

PolyBrominated Diphenyl Ethers (PBDE) on ZB-5

Column: Zebron[™] ZB-5, GC Cap. Column 15 m x 0.25 mm x 0.10 µm, Ea
Phase: 5% Phenyl 95% Dimethylpolysiloxane
Dimensions: 15 meters x 0.25 mm x 0.1 µm
Order No: 7EG-G002-02
Oven Profile: 70 °C to 160 °C @ 25 °C / min to 320 °C @ 10 °C / min hold 10 min

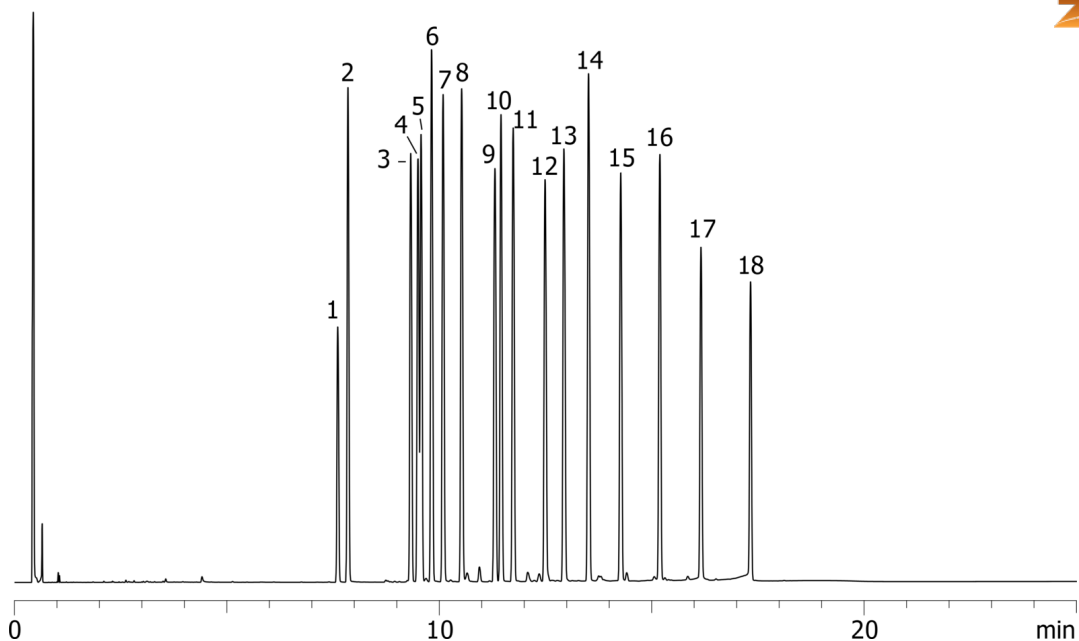
Carrier Gas: Constant Pressure Helium, 3.4 mL/min
Injection: On-Column :1 0.5 µL @ 73°C
Detection: Electron Capture (ECD) (340°C)
Analyst Note: PBDE Standard @ 2.5 ppm in iso-Octane



Products used in this application:



16307



PolyBrominated Diphenyl Ethers (PBDE) on ZB-5

ANALYTES:

- 1 PBDE-25
- 2 PBDE-28
- 3 PBDE-75
- 4 PBDE-49
- 5 PBDE-71
- 6 PBDE-47
- 7 PBDE-66
- 8 PBDE-77
- 9 PBDE-100
- 10 PBDE-119
- 11 PBDE-99
- 12 PBDE-85
- 13 PBDE-154
- 14 PBDE-153
- 15 PBDE-138
- 16 PBDE-183
- 17 PBDE-190
- 18 PBDE-203

