

HPLC Application

ID No.: 16318

SPE of Tetracyclines from Honey Using Gemini 5u

Column: Gemini[®] 5 μ m C18 110 Å, LC Column 150 x 3 mm, Ea

Dimensions: 150 x 3 mm ID

Order No: 00F-4435-Y0

Elution Type: Isocratic

Eluent A: 10 mM Oxalic acid

Eluent B: Acetonitrile

Gradient Profile:	Step No.	Time (min)	Pct A	Pct B
	1	0	80	20

Flow Rate: 0.8 mL/min

Col. Temp.: ambient

Detection: UV-Vis Abs.-Variable Wave.(UV) @ 365 nm (ambient)

Analyst Note: SecurityGuard[™] Guard Cartridge System extends column lifetime.

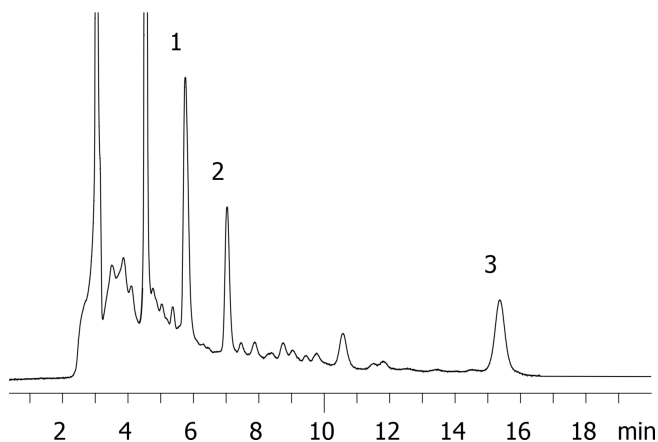
- SecurityGuard Cartridges, Gemini C18 4 x 2.0mm, 10/Pk Part No.: AJ0-7596

- Holder Part No.: KJ0-4282

16318



Products used in this application:



ANALYTES:

- 1** Oxytetracycline
Retention Time: 5.75 min
- 2** Tetracycline
Retention Time: 7.03 min
- 3** Chlortetracycline
Retention Time: 15.37 min

