

Food Industry FAMES on ZB-WAXplus

Column: Zebtron™ ZB-WAXplus™, GC Cap. Column 30 m x 0.25 mm x 0.25 μm, Ea

Phase: Polyethylene Glycol (PEG)

Dimensions: 30 meters x 0.25 mm x 0.25 μm

Order No: 7HG-G013-11

Oven Profile: 60 °C for 2 min to 150 °C at 13 °C/min. to 240 at 2 °C/min.

Carrier Gas: Constant Flow Helium, 3 mL/min

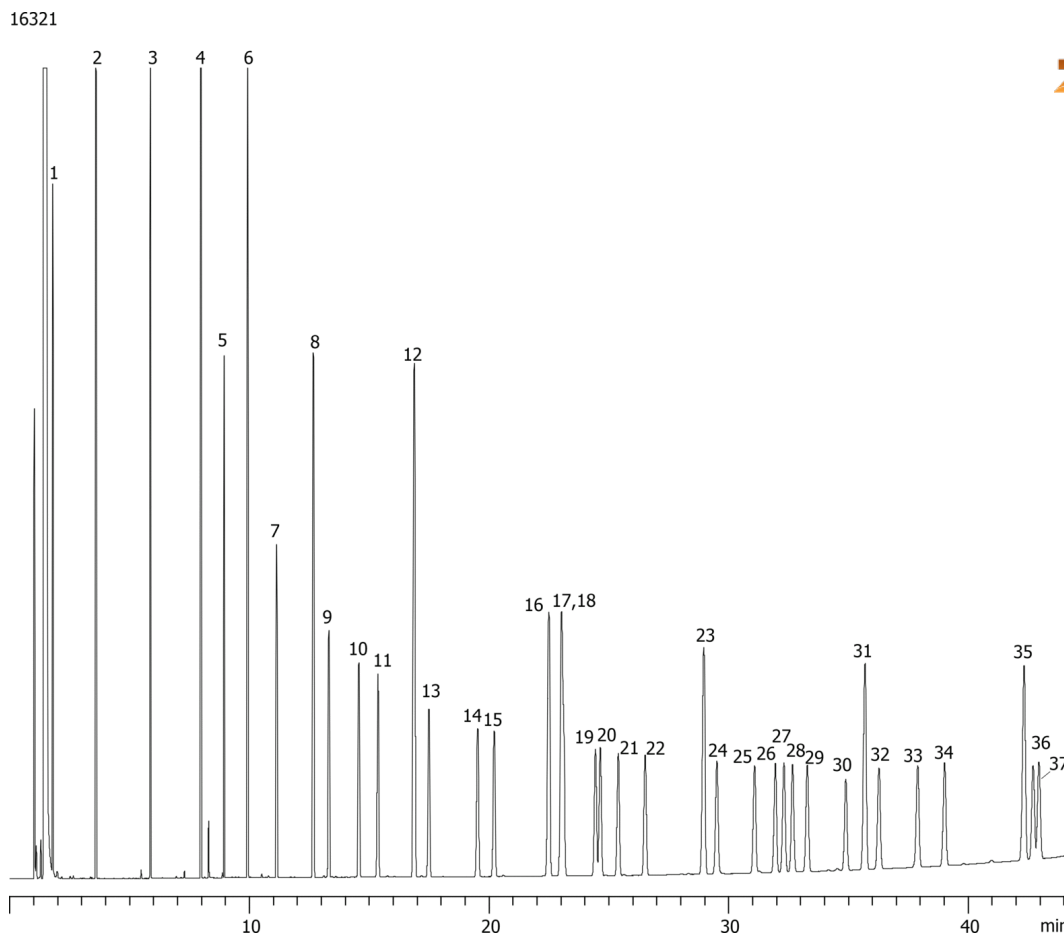
Injection: Split 5:1 1 μL @ 220°C

Detection: Flame Ionization (FID) (250°C)

Analyst Note: 133-266 ppm in methylene chloride.



Products used in this application:



Food Industry FAMES on ZB-WAXplus

ANALYTES:

- 1 Methyl butyrate (C4:0)
- 2 Methyl hexanoate (C6:0)
- 3 Methyl octanoate (C8:0)
- 4 Methyl decanoate (C10:0)
- 5 Methyl undecanoate (C11:0)
- 6 Methyl laurate (C12:0)
- 7 Methyl tridecanoate (C13:0)
- 8 Methyl myristate (C14:0)
- 9 Myristoleic acid methyl ester (C14:1)
- 10 Methyl pentadecanoate (C15:0)
- 11 cis-10-Pentadecenoic acid methyl ester (C15:1)
- 12 Methyl palmitate (C16:0)
- 13 Palmitoleic acid methyl ester (C16:1)
- 14 Methyl heptadecanoate (C17:0)
- 15 cis-10-Heptadecenoic acid methyl ester (C17:1)
- 16 Methyl stearate (C18:0)
- 17 Oleic acid methyl ester (C18:1n9c)
- 18 Elaidic acid methyl ester (C18:1n9t)
- 19 Linoleic acid methyl ester (C18:2n6c)
- 20 Linolelaidic acid methyl ester (C18:2n6t)
- 21 gamma-Linolenic acid methyl ester (C18:3n6)
- 22 Linolenic acid methyl ester (C18:3n3)
- 23 Methyl arachidate (C20:0)
- 24 cis-11-Eicosenoic acid methyl ester (C20:1)
- 25 cis-11,14-Eicosadienoic acid methyl ester (C20:2)
- 26 cis-8,11,14-Eicosatrienoic acid methyl ester (C20:3n6)
- 27 Methyl heneicosanoate (C21:0)
- 28 Arachidonic acid methyl ester (C20:4n6)
- 29 cis-11,14,17-Eicosatrienoic acid methyl ester (C20:3n3)
- 30 cis-5,8,11,14,17-Eicosapentaenoic acid methyl ester (C20:5n3)
- 31 Methyl behenate (C22:0)
- 32 Erucic acid methyl ester (C22:1)
- 33 cis-13,16-Docosadienoic acid methyl ester (C22:2)
- 34 Methyl tricosanoate (C23:0)
- 35 Methyl lignocerate (C24:0)
- 36 cis-4,7,10,13,16,19-Docosahexaenoic acid methyl ester (C22;6n3)
- 37 Nervonic acid methyl ester (C24:1)

