

GC Application

ID No.: 16322

Marine Oil FAMES on ZB-MR1

Column: Zebtron[™] ZB-MultiResidue[™]-1, GC Cap. Column 30 m x 0.25 mm x 0.25 μm, Ea

Phase: Unknown or Proprietary

Dimensions: 30 meters x 0.25 mm x 0.25 μm

Order No: 7HG-G016-11

Oven Profile: 60 °C for 2 min to 160 °C at 13 °C/min for 5 min to 275 °C at 2 °C/min hold 2 min.

Carrier Gas: Constant Flow Helium, 2 mL/min

Injection: Split 5:1 1 μL @ 250°C

Detection: Flame Ionization (FID) (280°C)

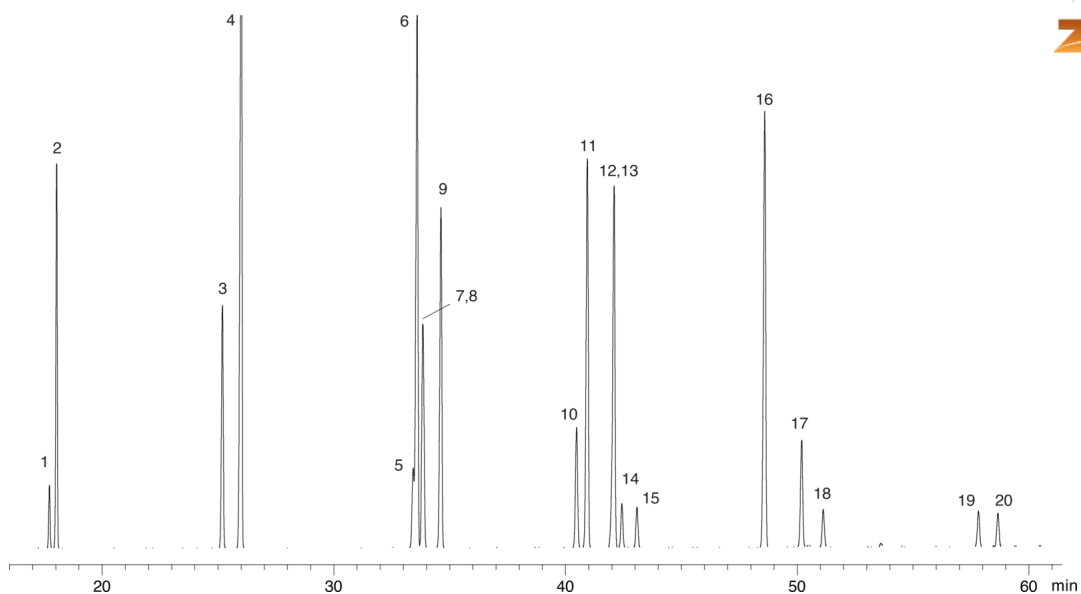
Analyst Note: Analytes 200-3200ppm in methylene chloride.



Products used in this application:



App ID 16322



Marine Oil FAMES on ZB-MR1

ANALYTES:

- 1 Methyl myristoleate (C4:1)
- 2 Methyl myristate (C4:0)
- 3 Methyl palmitoleate (C16:1)
- 4 Methyl palmitate (C16:0)
- 5 Methyl linoleate (C18:2)
- 6 Methyl vaccenate (C18:1)
- 7 Methyl linolenate (C18:3)
- 8 Methyl oleate (C18:1)
- 9 Methyl stearate (C18:0)
- 10 Methyl arachidonate (C20:4)
- 11 Methyl eicosapentaenoate (C20:5)
- 12 Methyl 11,14-eicosadienoate (C20:2)
- 13 Methyl 11-eicosanoate (C20:1)
- 14 Methyl-11,14,17-eicosatrienoate (C20:3)
- 15 Methyl arachidate (C20:0)
- 16 Methyl docosahexaenoate (C22:6)
- 17 Methyl erucate (C22:1)
- 18 Methyl behenate (22:0)
- 19 Methyl nervonate (C24:1)
- 20 Methyl lignocerate (C24:0)

