

# GC Application

ID No.: 16332

## Marine Oil FAMES on ZB-WAXplus

**Column:** Zebtron<sup>™</sup> ZB-WAXplus<sup>™</sup>, GC Cap. Column 30 m x 0.32 mm x 0.25 μm, Ea

**Phase:** Polyethylene Glycol (PEG)

**Dimensions:** 30 meters x 0.32 mm x 0.25 μm

**Order No:** 7HM-G013-11

**Oven Profile:** 170 °C to 200 °C @ 2 °C/min for 1 min to 250 °C @ 18 °C/min for 15 min.

**Carrier Gas:** Constant Flow Helium, 1 mL/min

**Injection:** Split 150:1 0.5 μL @ 220°C

**Detection:** Flame Ionization (FID) (250°C)

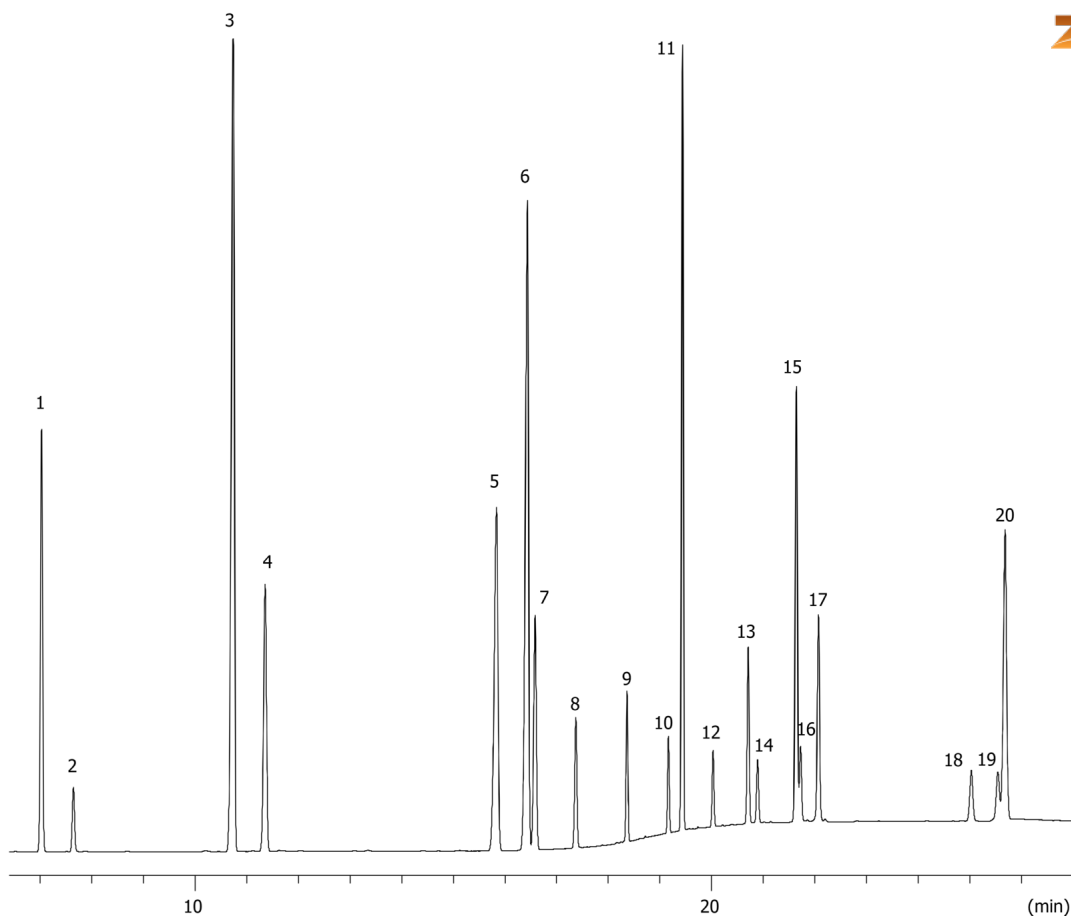
**Analyst Note:** Analytes are 200-3200 ppm in dichloromethane.



Products used in this application:



16332



## Marine Oil FAMES on ZB-WAXplus

### ANALYTES:

- 1 Methyl myristate (C14:0)
- 2 Methyl myristoleate (C14:1)
- 3 Methyl palmitate (C16:0)
- 4 Methyl palmitoleate (C16:1)
- 5 Methyl stearate (C18:0)
- 6 Methyl oleate (C18:1)
- 7 Methyl vaccenate (C18:1)
- 8 Methyl linoleate (C18:2)
- 9 Methyl linolenate (C18:3)
- 10 Methyl arachidate (20:0)
- 11 Methyl 11-eicosenoate (C20:1)
- 12 Methyl 11,14-eicosadienoate (C20:2)
- 13 Methyl arachidonate (C20:4)
- 14 Methyl 11,14,17-eicosatrienoate (C20:3)
- 15 Methyl eicosapentaenoate (C20:5)
- 16 Methyl behenate (22:0)
- 17 Methyl erucate (C22:1n9)
- 18 Methyl lignocerate (C24:0)
- 19 Methyl nervonate (C24:1)
- 20 Methyl docosahexaenoate (C22:6n3)

