

HPLC Application

ID No.: 16334

Morphine and Metabolites on Luna 5um HILIC

Column: Luna® 5 µm HILIC 200 Å, LC Column 100 x 2 mm, Ea

Dimensions: 100 x 2 mm ID

Order No: 00D-4450-B0

Elution Type: Gradient

Eluent A: 90/10 Acetonitrile/100mM Ammonium Formate pH 3.2

Eluent B: 50/50 Acetonitrile/20mM Ammonium Formate pH 3.2

Gradient Profile:	Step No.	Time (min)	Pct A	Pct B
	1	0	100	0
	2	1	100	0
	3	3	0	100
	4	4.5	0	100
	5	4.51	100	0
	6	9.51	100	0

Flow Rate: 0.4 mL/min

Col. Temp.: ambient

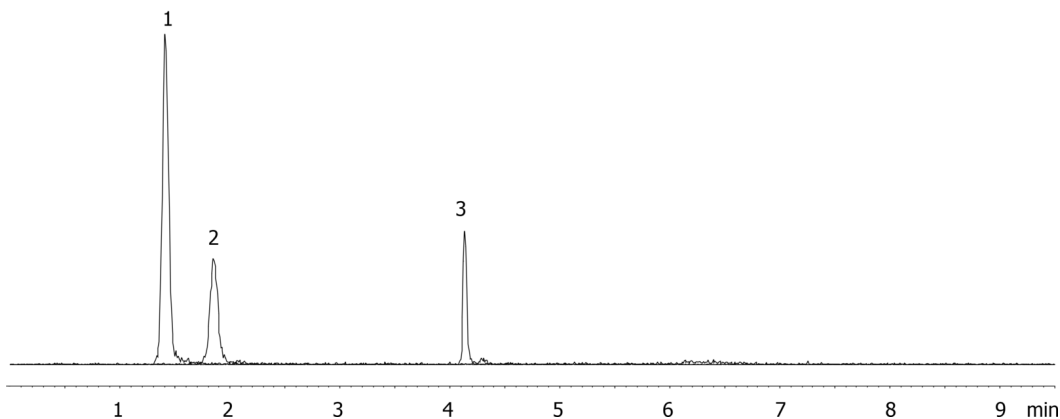
Detection: Mass Spectrometer (MS) @ amu (ambient)

Detector Info: ABI 3000 Triple Quad MS

Analyst Note: The pH of the aqueous buffer is specified. The pH in mixed organic was not measured.
16334



Products used in this application:



ANALYTES:

- 1 Morphine
- 2 Normorphine
- 3 Morphine-3-beta-D-glucuronide

