

# HPLC Application

ID No.: 16335

## Nicotine and Metabolites on Luna 5um HILIC

**Column:** Luna® 5 µm HILIC 200 Å, LC Column 100 x 2 mm, Ea

**Dimensions:** 100 x 2 mm ID

**Order No:** 00D-4450-B0

**Elution Type:** Isocratic

**Eluent A:** 90/10 Acetonitrile/100mM Ammonium Formate pH 3.2

Gradient	Step No.	Time (min)	Pct A
<b>Profile:</b>	<b>1</b>	0	100

**Flow Rate:** 0.4 mL/min

**Col. Temp.:** ambient

**Detection:** Mass Spectrometer (MS) @ amu (ambient)

**Detector Info:** ABI 3000 Triple Quad MS

MRM transitions monitored:

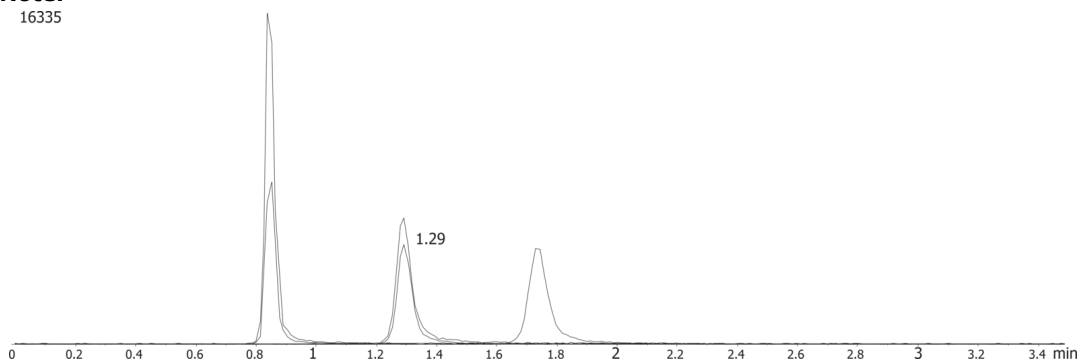
Nicotine: m/z 163.3/105.9 and 163.3/80.1

Nornicotine: m/z 149.1/80.1

Cotinine: m/z 177.3/98.0 and 177.3/80.1

**Analyst Note:** The pH of the aqueous buffer is specified. The pH in mixed organic was not measured.

16335



Products used in this application:



### ANALYTES:

- 1 Cotinine
- 2 Nicotine
- 3 Nornicotine

