

GC Application

ID No.: 16346

Marine Oil FAMES on ZB-WAX

Column: Zebtron[™] ZB-WAX, GC Cap. Column 30 m x 0.25 mm x 0.25 μm, Ea

Phase: Polyethylene Glycol (PEG)

Dimensions: 30 meters x 0.25 mm x 0.25 μm

Order No: 7HG-G007-11

Oven Profile: 160 °C to 200 °C @ 5 °C/min for 25 min.

Carrier Gas: Constant Pressure Helium, 3 mL/min

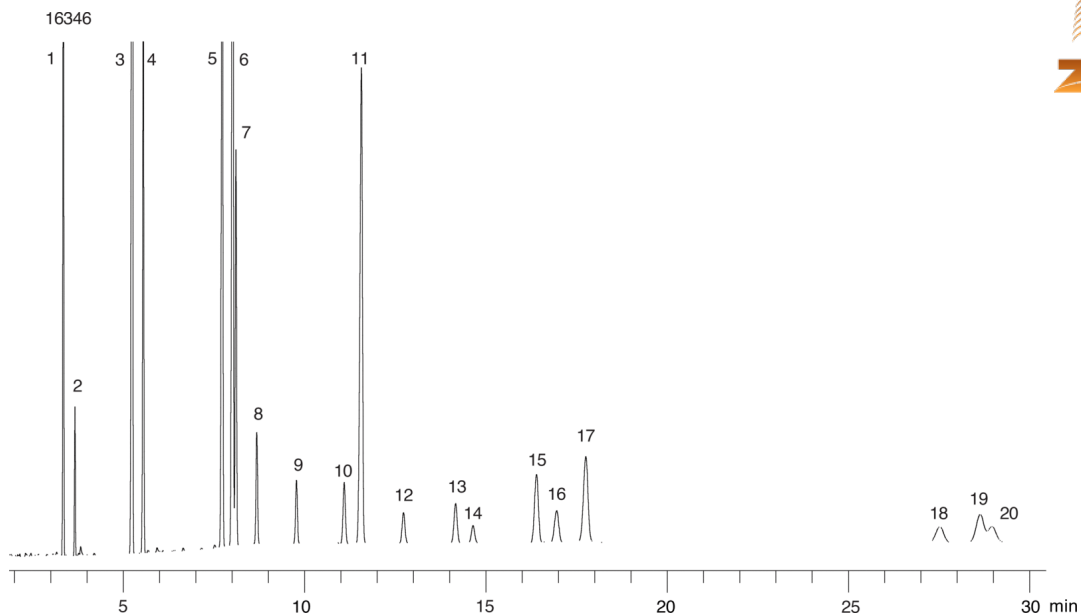
Injection: Split 30:1 0.5 μL @ 220°C

Detection: Flame Ionization (FID) (250°C)

Analyst Note: Analytes are 333-5333 ppm in dichloromethane.



Products used in this application:



Marine Oil FAMES on ZB-WAX

ANALYTES:

- 1 Methyl myristate (C14:0)
- 2 Methyl myristoleate (C14:1)
- 3 Methyl palmitate (C16:0)
- 4 Methyl palmitoleate (C16:1)
- 5 Methyl stearate (C18:0)
- 6 Methyl oleate (C18:1)
- 7 Methyl vaccenate (C18:1)
- 8 Methyl linoleate (C18:2)
- 9 Methyl linolenate (C18:3)
- 10 Methyl arachidate (C20:0)
- 11 Methyl 11-eicosenoate (C20:1)
- 12 Methyl 11,14-eicosadienoate (C20:2)
- 13 Methyl arachidonate (20:4)
- 14 Methyl 11,14,17-eicosatrienoate (C20:3)
- 15 Methyl eicosapentaenoate (C20:5)
- 16 Methyl behenate (C22:0)
- 17 Methyl erucate (C22:1)
- 18 Methyl lignocerate (C24:0)
- 19 Methyl docosahexaenoate (C22:6)
- 20 Methyl nervonate (C24:1)

