

# GC Application

ID No.: 16360

## Borneol on ZB-MR1

**Column:** Zebtron<sup>™</sup> ZB-MultiResidue<sup>™</sup>-1, GC Cap. Column 30 m x 0.25 mm x 0.25  $\mu$ m, Ea

**Phase:** Unknown or Proprietary

**Dimensions:** 30 meters x 0.25 mm x 0.25  $\mu$ m

**Order No:** 7HG-G016-11

**Oven Profile:** 60 °C for 2 min to 270 °C @ 10 °C/min

**Carrier Gas:** Constant Flow Helium, 0.3 mL/min

**Injection:** Splitless :1 1  $\mu$ L @ 270°C

**Detection:** Mass Selective (MSD) (230°C)

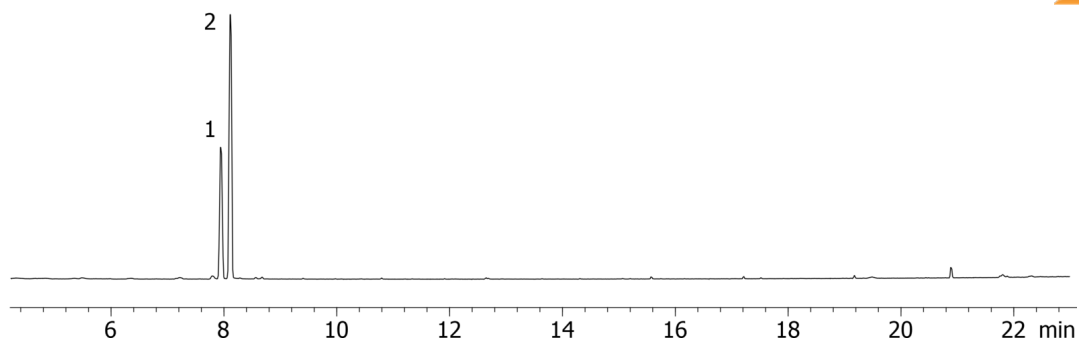
**Analyst Note:** Dilute Borneol in Methanol



Products used in this application:



16360



### ANALYTES:

- 1 Isoborneol
- 2 Borneol

