

# HPLC Application

ID No.: 16365

## Luna 2.5 µm C18(2) 3 mm ID Ketone mix without Guard

**Column:** Luna® 2.5 µm C18(2) 100 Å, LC Column 50 x 3 mm, Ea

**Dimensions:** 50 x 3 mm ID

**Order No:** 00B-4446-Y0

**Elution Type:** Gradient

**Eluent A:** Water

**Eluent B:** Acetonitrile

Gradient Profile:	Step No.	Time (min)	Pct A	Pct B
	1	0.3	90	10
	2	2.5	95	5
	3	3.5	95	5
	4	3.6	90	10
	5	4.5	90	10

**Flow Rate:** 2 mL/min

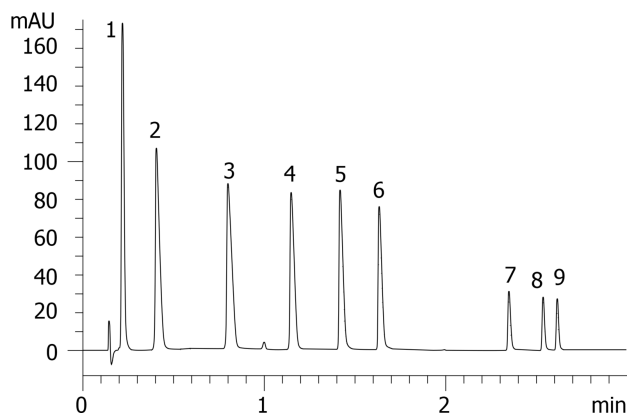
**Col. Temp.:** ambient

**Detection:** UV-Vis Abs.-Variable Wave.(UV) @ 270 nm (35 °C)

**Detector Info:** without guard column  
16365



Products used in this application:



### ANALYTES:

- 1 Acetone  
Retention Time: 0.226 min
- 2 2-Butanone  
Retention Time: 0.413 min
- 3 2-Pentanone  
Retention Time: 0.808 min
- 4 2-Hexanone  
Retention Time: 1.156 min
- 5 2-Heptanone  
Retention Time: 1.426 min
- 6 2-Octanone  
Retention Time: 1.64 min
- 7 2-Tridecanone  
Retention Time: 2.356 min
- 8 2-Pentadecanone  
Retention Time: 2.544 min
- 9 2-Hexadecanone  
Retention Time: 2.622 min

©2024 Phenomenex Inc. All rights reserved.

For more information contact your Phenomenex Representative at support@phenomenex.com



Phenomenex products are available worldwide.

[www.phenomenex.com](http://www.phenomenex.com)

[support@phenomenex.com](mailto:support@phenomenex.com)