

Nitrogen and Phosphorous Pesticides on ZB-MR1

Column: Zebtron™ ZB-MultiResidue™-1, GC Cap. Column 30 m x 0.25 mm x 0.25 μm, Ea

Phase: Unknown or Proprietary

Dimensions: 30 meters x 0.25 mm x 0.25 μm

Order No: 7HG-G016-11

Oven Profile: 60 °C for 0.5 min to 320 °C @ 10 °C/min for 5 min

Carrier Gas: Constant Flow Helium, 0.9 mL/min

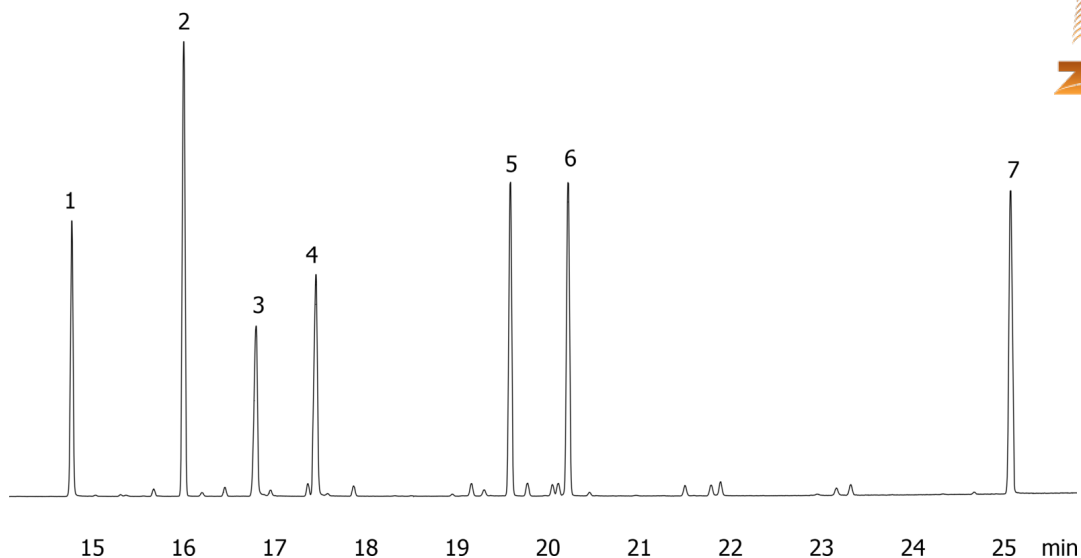
Injection: Splitless :1 1 μL @ 260°C

Detection: Mass Selective (MSD) (180°C)

16377



Products used in this application:



ANALYTES:

- 1 TEPP
- 2 Sulfotep
- 3 Monochrotophos
- 4 Dimethoate
- 5 Malathion
- 6 Parathion
- 7 EPN

