

# GC Application

ID No.: 16387

## Nitrogen and Phosphorous Pesticides on ZB-MR2

**Column:** Zebtron<sup>™</sup> ZB-MultiResidue<sup>™</sup>-2, GC Cap. Column 30 m x 0.25 mm x 0.20 μm, Ea

**Phase:** Unknown or Proprietary

**Dimensions:** 30 meters x 0.25 mm x 0.2 μm

**Order No:** 7HG-G017-10

**Oven Profile:** 80 °C for 0.5 min to 150 °C @ 10 °C/min to 240 °C @ 4 °C/min to 320 °C @ 15 °C/min for 3 min

**Carrier Gas:** Constant Flow Helium, 0.9 mL/min

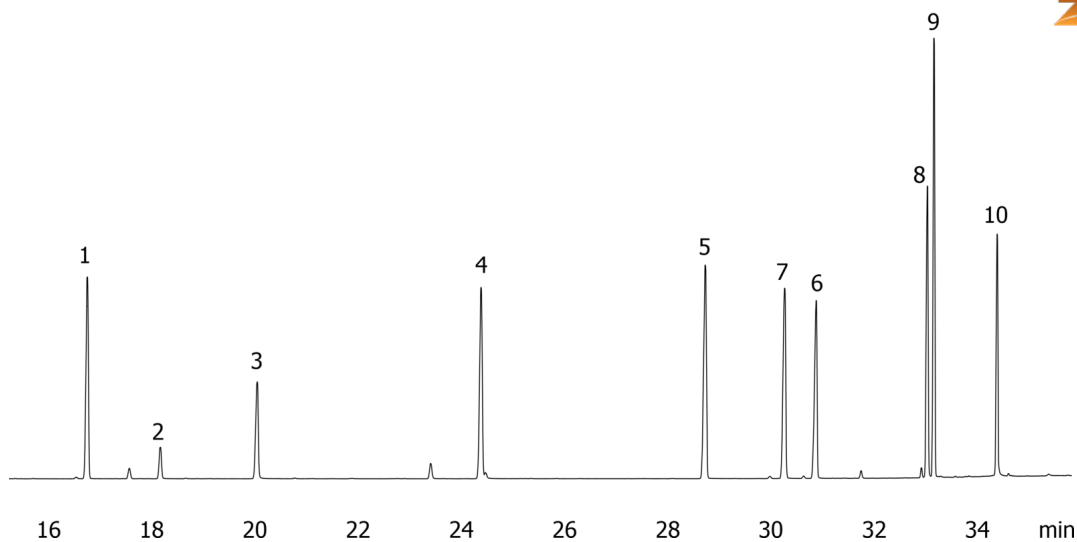
**Injection:** Splitless :1 1 μL @ 260°C

**Detection:** Mass Selective (MSD) (180°C)

16387



Products used in this application:



## Nitrogen and Phosphorous Pesticides on ZB-MR2

### ANALYTES:

- 1 Terbufos
- 2 Phosphamidon
- 3 Phosphamidon
- 4 Chlorfenvinphos
- 5 Ethion
- 6 Famphur
- 7 Carbophenothion
- 8 Phosmet
- 9 Leptophos
- 10 Azinphos-ethyl

